

Product:

**WOODWAITER:
SHOP DRAWINGS**

Manufactured by:

W. Bruce Fowler Industries Inc.

4665 Nichol Road
Waterville, Quebec, J0B 3H0

Tél: (819)562-8510

Fax: (819)562-2906

Model no:

Date:

July 16th 2007

- A:** SPACING BETWEEN JOISTS
B: DEPTH BETWEEN JOISTS
C: OVERALL LENGTH OF UNIT
D: MINIMUM WIDTH UNDERNEATH FLOOR
E: TRAVEL DISTANCE OF BASKET
F: BASKET WIDTH
G: BASKET DEPTH
H: RECOMMENDED WIDTH OF FLOOR OPENING
 (CLEARANCE FOR PASSAGE OF BASKET)
K: RECOMMENDED DEPTH OF FLOOR OPENING
 (CLEARANCE FOR PASSAGE OF BASKET)

MODELS	DIMENSIONS										
	A	B	C	D	E	F	G	H	K		
1ØØ	22" min	2Ø"	6Ø"	26"	51"	18"	18"	18 1/4"	19 1/8"		
1Ø2	22" min	28"	6Ø"	26"	51"	18"	26"	18 1/4"	27 1/8"		
1Ø3	3Ø" min	2Ø"	6Ø"	34 1/2"	51"	26"	18"	26 1/4"	19 1/8"		
1Ø4	3Ø" min	28"	6Ø"	34 1/2"	51"	26"	26"	26 1/4"	27 1/8"		
12Ø	22" min	2Ø"	91"	26"	78"	18"	18"	18 1/4"	19 1/8"		
122	22" min	28"	91"	26"	78"	18"	26"	18 1/4"	27 1/8"		
123	3Ø" min	2Ø"	91"	34 1/2"	78"	26"	18"	26 1/4"	19 1/8"		
124	3Ø" min	28"	91"	34 1/2"	78"	26"	26"	26 1/4"	27 1/8"		
14Ø	22" min	2Ø"	1Ø9"	26"	96"	18"	18"	18 1/4"	19 1/8"		
142	22" min	28"	1Ø9"	26"	96"	18"	26"	18 1/4"	27 1/8"		
143	3Ø" min	2Ø"	1Ø9"	34 1/2"	96"	26"	18"	26 1/4"	19 1/8"		
144	3Ø" min	28"	1Ø9"	34 1/2"	96"	26"	26"	26 1/4"	27 1/8"		

Manufactured by:
W. Bruce Fowler Industries Inc.
 4665 Nichol Road
 Waterville, Quebec, JOB 3H0
 Tel: (819)562-8510
 Fax: (819)562-2906

Product:
WOODWALTER
 Date:
 June 12th 2006

Drawing:
MODELS AND DIMENSIONS
 Drawing No **W 1ØØ**

FLOOR STRUCTURE:

- . FLOOR STRUCTURES SHOWN IN DRAWINGS ARE EXAMPLES ONLY. EXACT CONDITIONS MAY VARY
- . MODIFY AND REINFORCE FLOOR STRUCTURE TO INSTALL WOODWAITER.

- . MODIFICATIONS TO NEW OR EXISTING FLOOR STRUCTURES MUST COMPLY TO LOCAL BUILDING CODES

TRAP DOORS:

- . TRAP DOORS SHOWN ON DRAWINGS ARE EXAMPLES ONLY.
- . ALL TRAP DOORS ARE DESIGNED AND BUILT BY OTHERS (CONTRACTOR, INSTALLER, ETC).
- . TRAP DOORS MUST BE DESIGNED TO SUPPORT ALL LOADS (INCLUDING PEOPLE) IN COMPLIANCE WITH LOCAL BUILDING CODES

CUSTOMIZATIONS WITHOUT CHARGE:

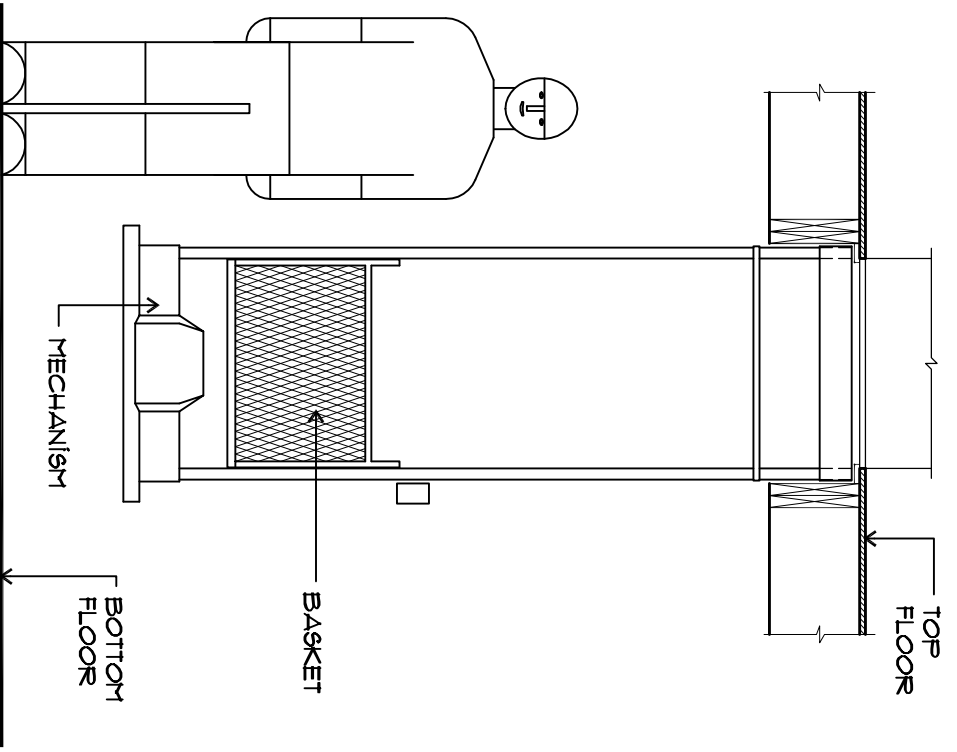
- A- SWITCH BOX CAN BE MOVED OR LEFT UNATTACHED TO BE MOUNTED ON SITE
- B- BASKET OPEN IN FRONT AND BACK
- C- ALTERING TOP FRAME TO ALLOW BASKET TO STOP HIGHER THAN TOP FLOOR

OPTIONS:

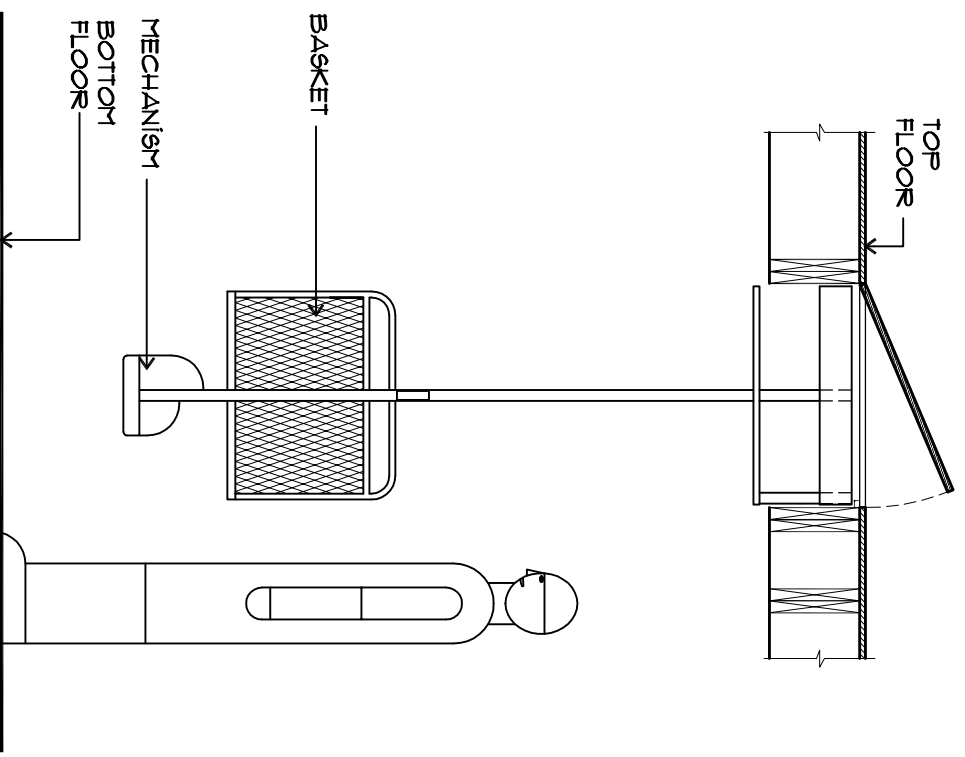
- . OPTION NO 1: BASKET BUILT OUT OF SOLID METAL INSTEAD OF EXPANDED METAL ON 4 SIDES FOR PELLET TRANSPORTATION
- . OPTION NO 2: BASKET WITH FLOP DOWN DOORS
- . OPTION NO 3: SECOND SWITCH FOR OPERATION FROM EITHER FLOOR
- . OPTION NO 4: BASKET ON WHEELS (EXCEPT 18"x18" BASKETS)

- . DEPTH OF BASKET AND UNIT CAN BE MODIFIED FOR SPECIFIC SITUATIONS
- . FURTHER CUSTOMIZATION UPON REQUEST

Manufactured by: W. Bruce Fowler Industries Inc. 4665 Nichol Road Waterville, Quebec, JOB 3H0 Tél: (819)562-8510 Fax: (819)562-2906	Product: WOODWAITER	Drawing: NOTES
	Date: JULY 16TH, 2007	Drawing No: W101



FRONT VIEW

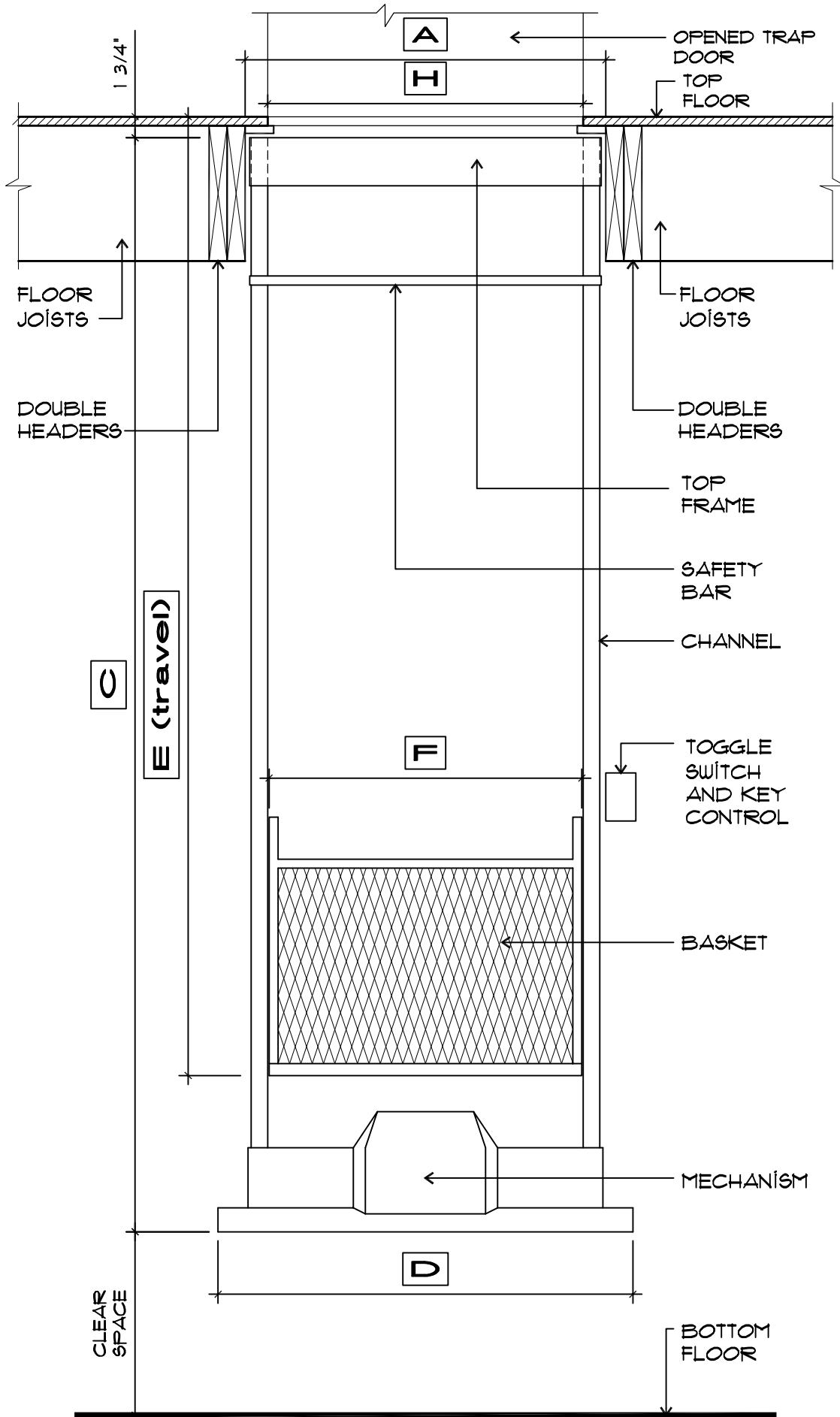


SIDE VIEW

Manufactured by:
W. Bruce Fowler Industries Inc.
 4665 Nichol Road
 Waterville, Quebec, JOB 3H0
 Tel: (819)562-8510
 Fax: (819)562-2906

Product: **WOODWALTER**
 Date: May 23rd 2006

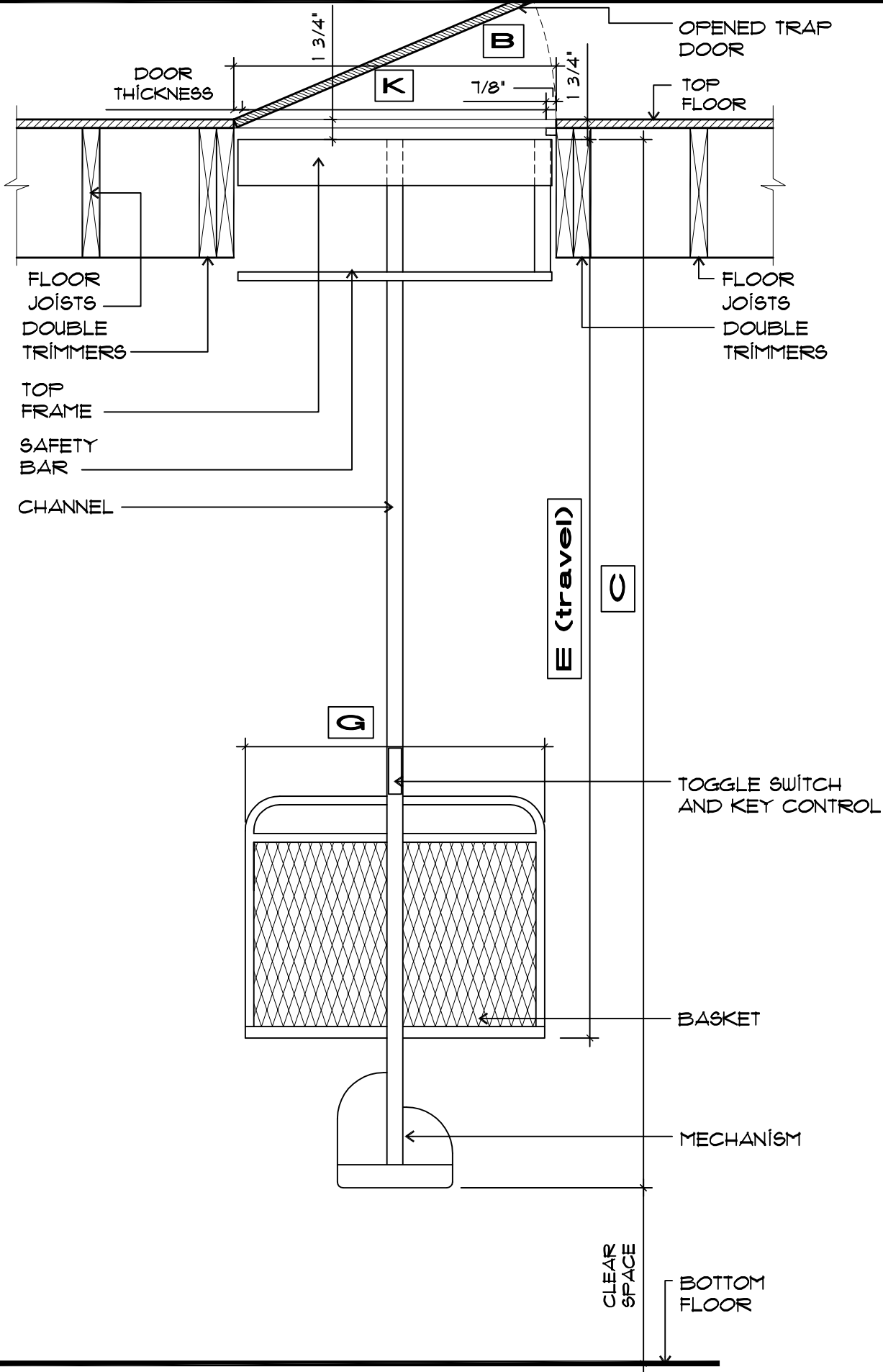
Drawing: **FRONT AND SIDE VIEW**
 Drawing No: **W102**



Drawing: **FRONT VIEW**
 Drawing No **W 103**

Product: **WOODWALTER**
 Date: **May 23rd 2006**

Manufactured by:
W. Bruce Fowler Industries Inc.
 4665 Nichol Road
 Waterville, Quebec, JOB 3H0
 Tél: (819)562-8510
 Fax: (819)562-2906

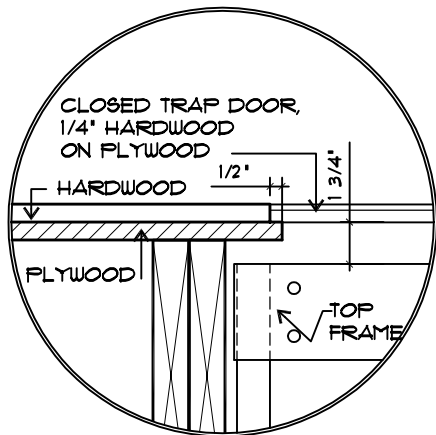


Manufactured by:
W. Bruce Fowler Industries Inc.
 4665 Nichol Road
 Waterville, Quebec, JOB 3H0
 Tél: (819)562-8510
 Fax: (819)562-2906

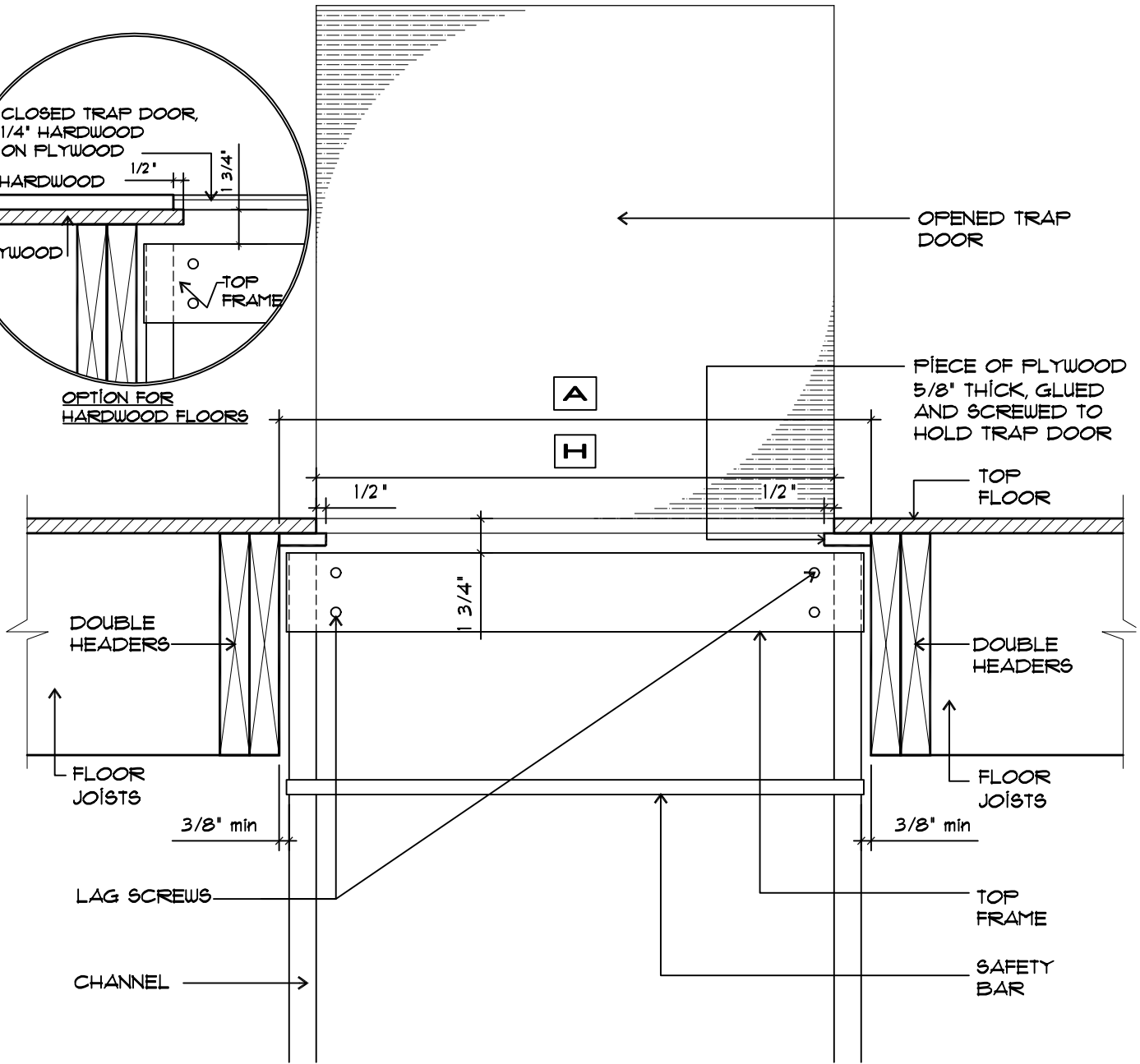
Product: **WOODWALTER**
 Date: **May 23rd 2006**

Drawing: **SIDE VIEW**
 Drawing No: **W 104**

NOTE:
 SIZE OF TRAP DOOR
 MUST BE SMALLER
 THAN OPENING IN
 FLOOR, 1/8" ON EACH
 SIDE



OPTION FOR
 HARDWOOD FLOORS



Manufactured by:
W. Bruce Fowler Industries Inc.
 4665 Nichol Road
 Waterville, Quebec, JOB 3H0
 Tél: (819)562-8510
 Fax: (819)562-2906

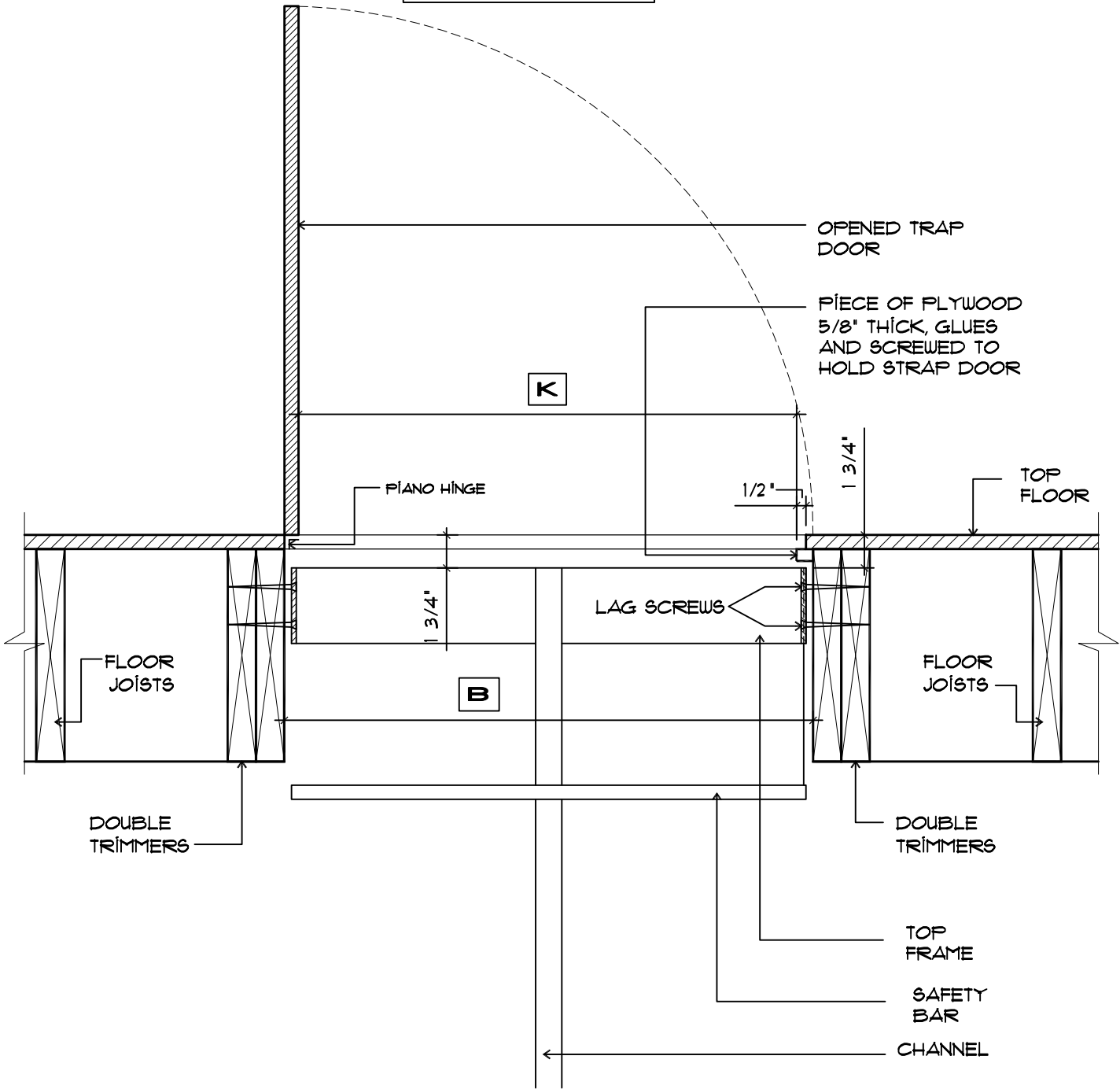
Product:
WOODWAITER

Date:
 MAY 23rd, 2006

Drawing:
 FRONT VIEW
 OF TOP FRAME

Drawing No: **W105**

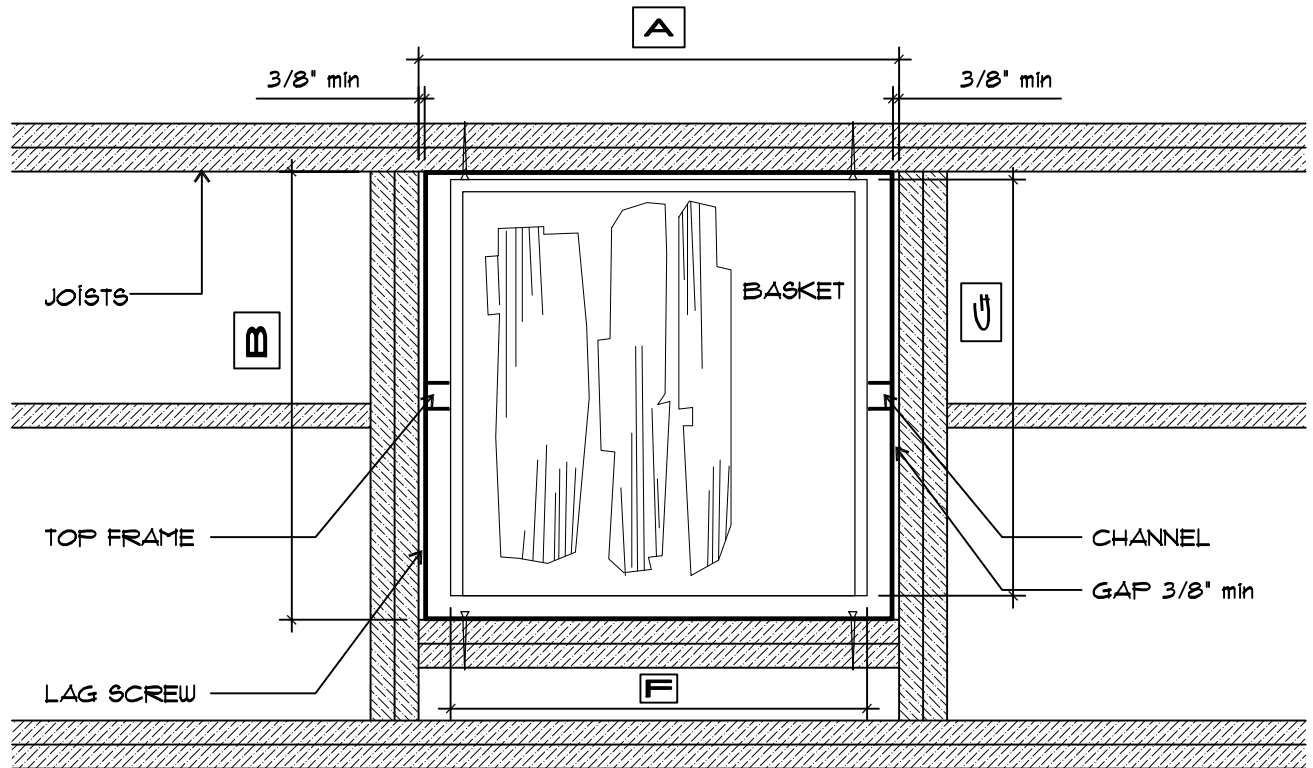
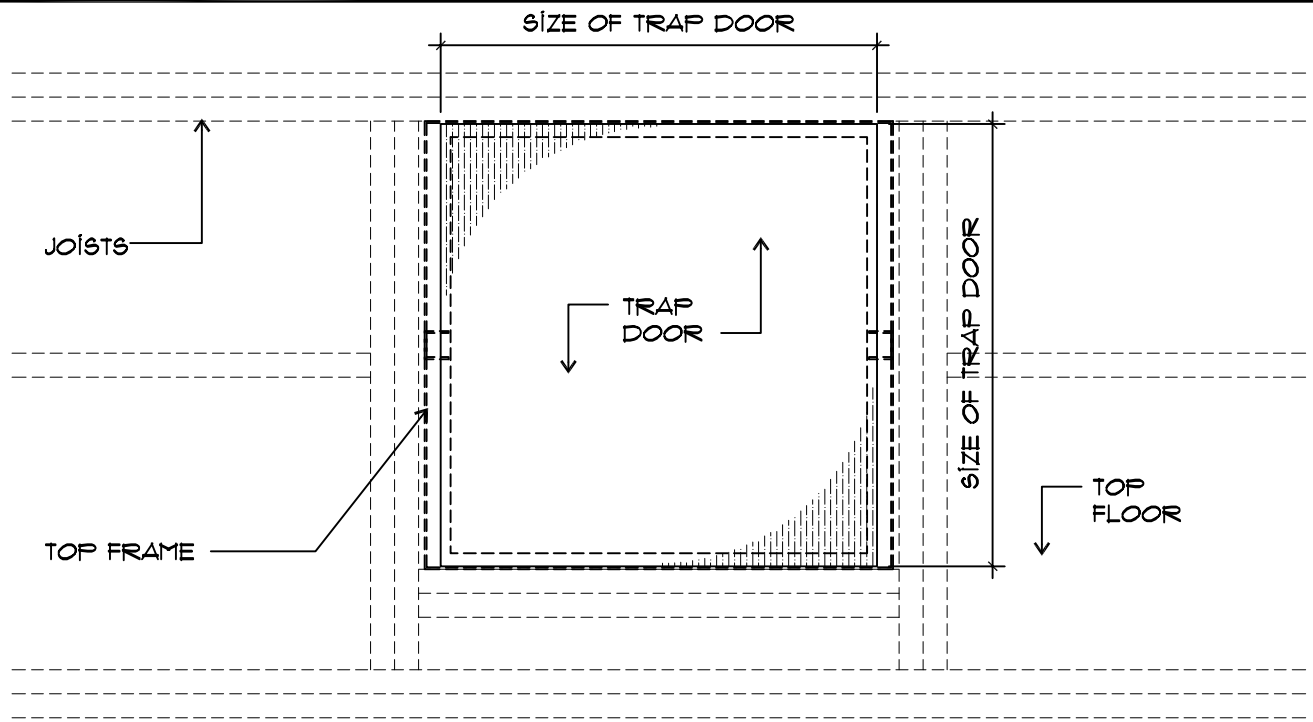
NOTE:
 SIZE OF TRAP DOOR
 MUST BE SMALLER
 THAN OPENING IN
 FLOOR, 1/8" ON EACH
 SIDE



Manufactured by:
W. Bruce Fowler Industries Inc.
 4665 Nichol Road
 Waterville, Quebec, JOB 3H0
 Tél: (819)562-8510
 Fax: (819)562-2906

Product:
WOODWAITER
 Date:
 MAY 23rd, 2006

Drawing:
 SIDE VIEW
 OF TOP FRAME
 Drawing No: **W106**



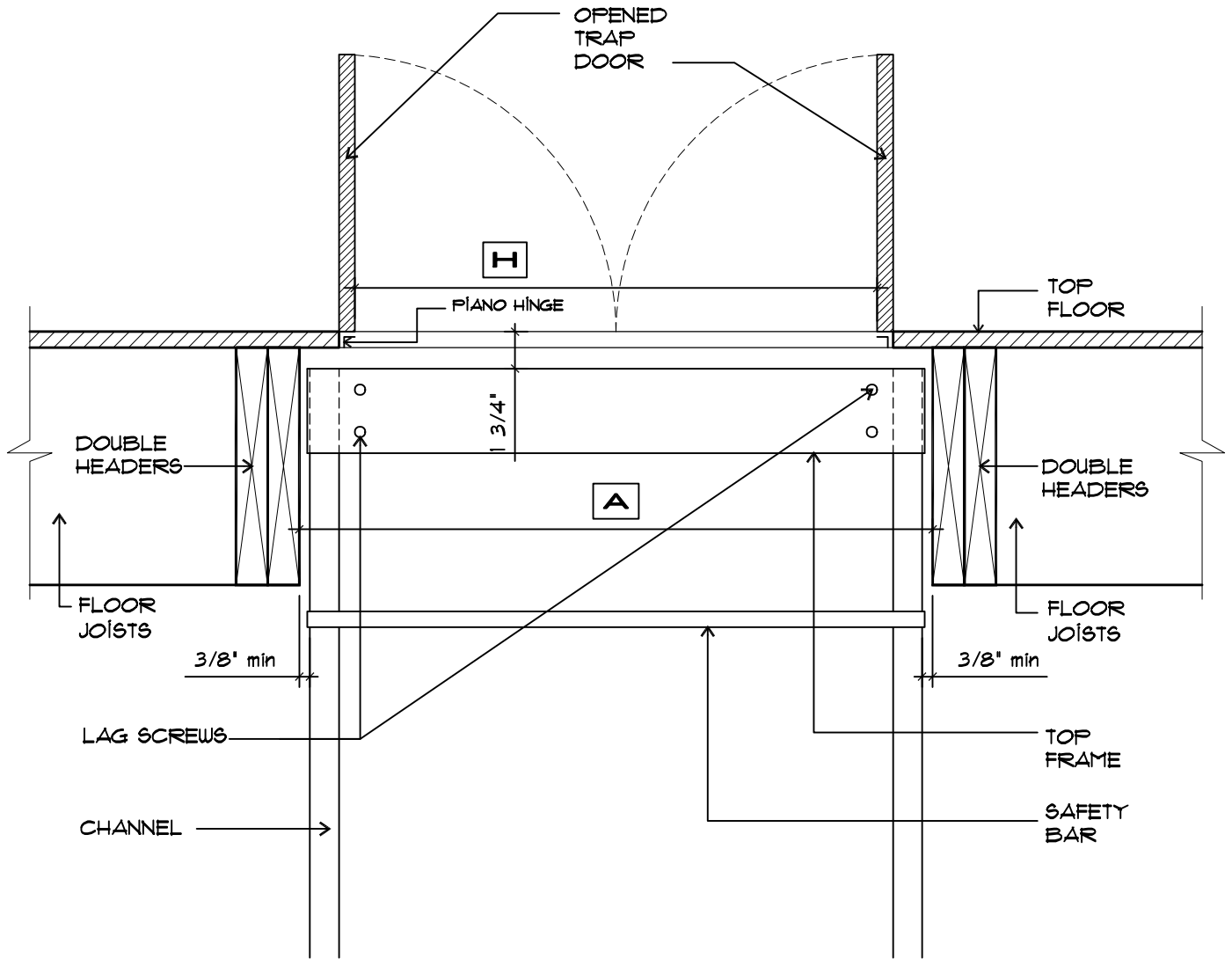
NOTE:
DRAWING IS NOT TO SCALE

Manufactured by:
W. Bruce Fowler Industries Inc.
4665 Nichol Road
Waterville, Quebec, JOB 3H0
Tél: (819)562-8510
Fax: (819)562-2906

Product:
WOODWAITER
Date:
MAY 23rd, 2006

Drawing:
TOP VIEW
Drawing No:
W107

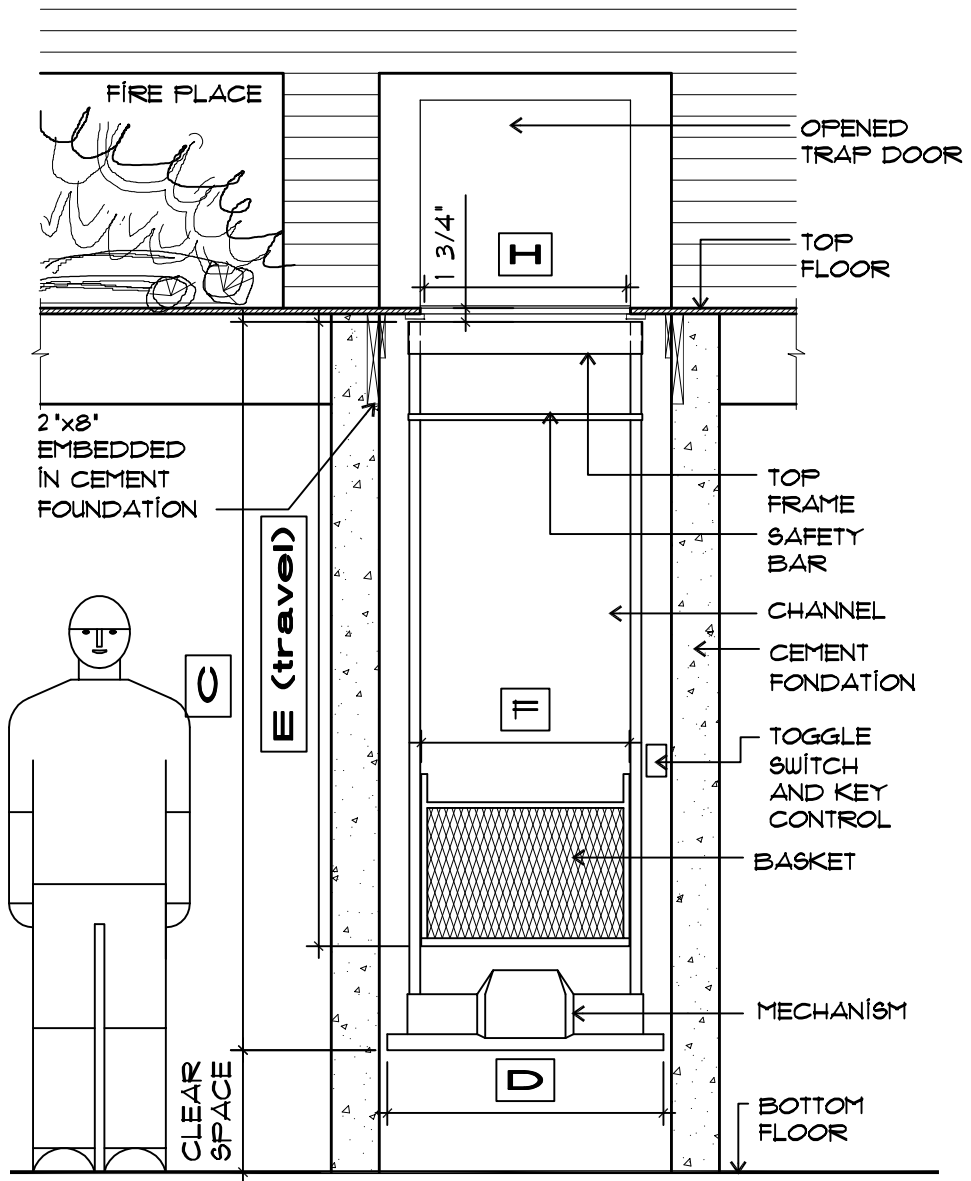
NOTE:
 THIS TYPE OF TRAP DOOR MUST
 BE BUILT TO SUPPORT PEOPLE
 AND OBJECTS. TRAP DOOR MUST
 COMPLY TO LOCAL BUILDING
 CODE



Manufactured by:
W. Bruce Fowler Industries Inc.
 4665 Nichol Road
 Waterville, Quebec, JOB 3H0
 Tél: (819)562-8510
 Fax: (819)562-2906

Product:
WOODWAITER
 Date:
 MAY 23rd, 2006

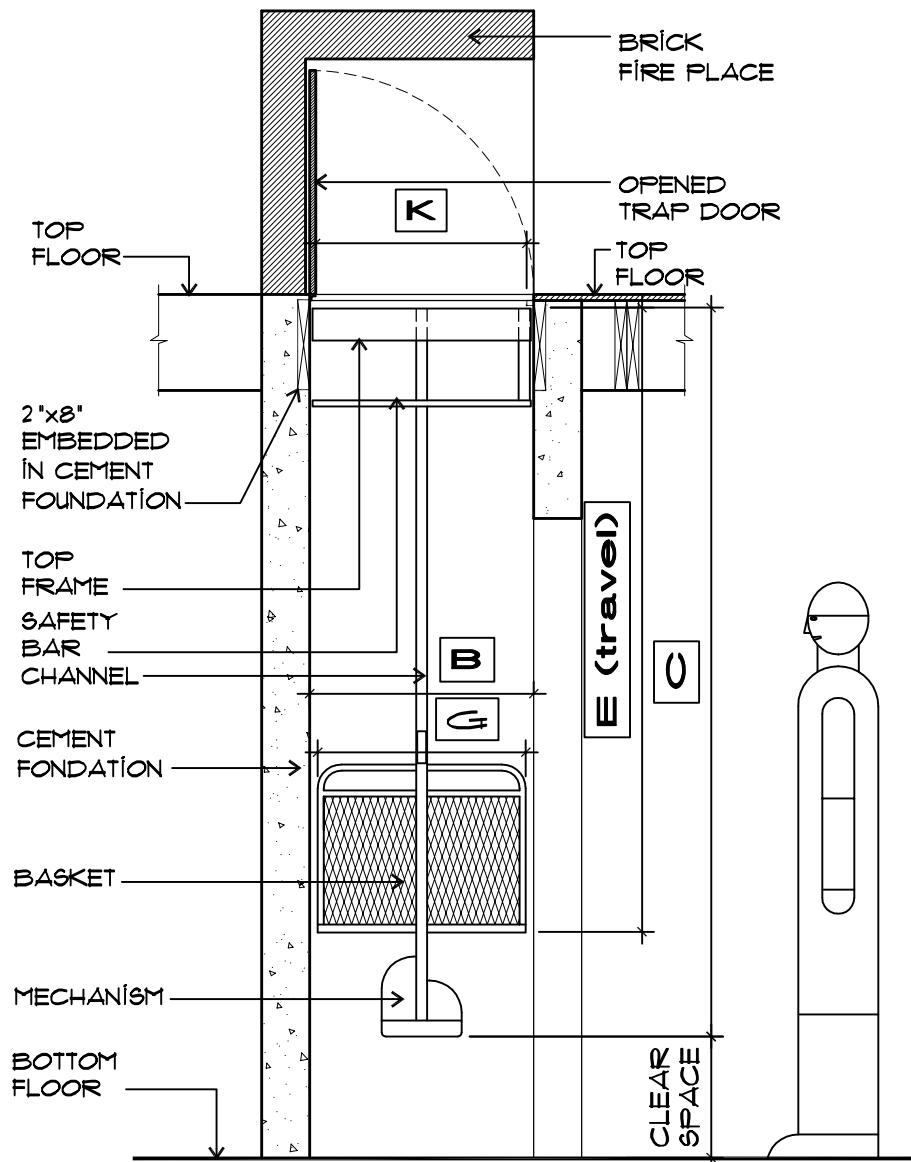
Drawing:
 SIDE VIEW OF TOP FRAME
 BUTTERFLY DOOR OPTION
 Drawing No: **W108**



Manufactured by:
W. Bruce Fowler Industries Inc.
 4665 Nichol Road
 Waterville, Quebec, JOB 3H0
 Tél: (819)562-8510
 Fax: (819)562-2906

Product:
WOODWAÏTER
 Date:
 MAY 23rd, 2006

Drawing:
 FRONT VIEW (MOUNTED
 WITHIN THE FIREPLACE)
 Drawing No: **W109**

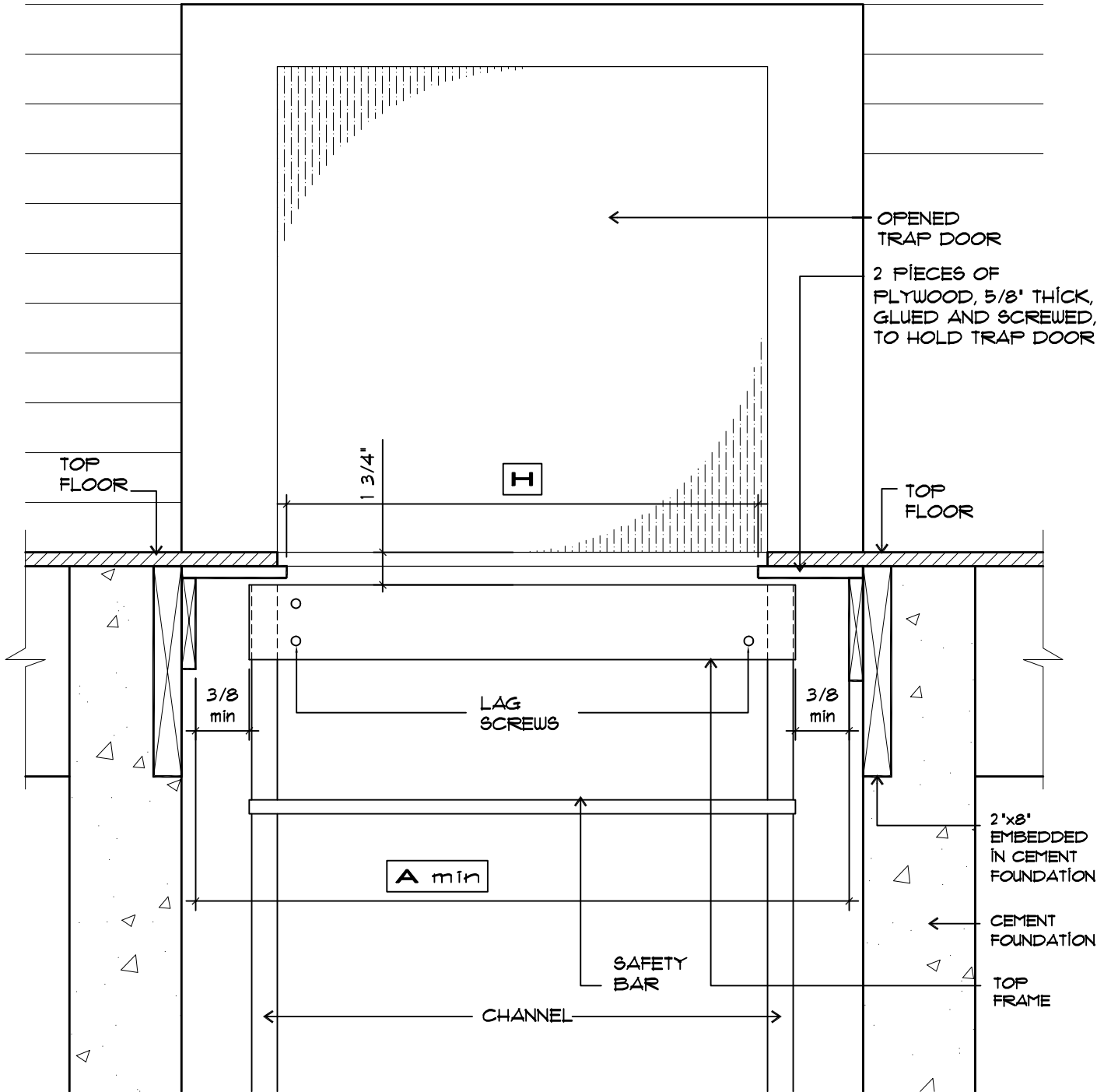


Manufactured by:
W. Bruce Fowler Industries Inc.
 4665 Nichol Road
 Waterville, Quebec, JOB 3H0
 Tél: (819)562-8510
 Fax: (819)562-2906

Product:
WOODWAITER
 Date:
 MAY 23rd, 2006

Drawing:
 SIDE VIEW (MOUNTED WITHIN THE FIREPLACE)
 Drawing No: W110

NOTE:
 SIZE OF TRAP DOOR MUST BE SMALLER
 THAN OPENING IN PLYWOOD FLOOR 1/8" ON
 EACH SIDE.



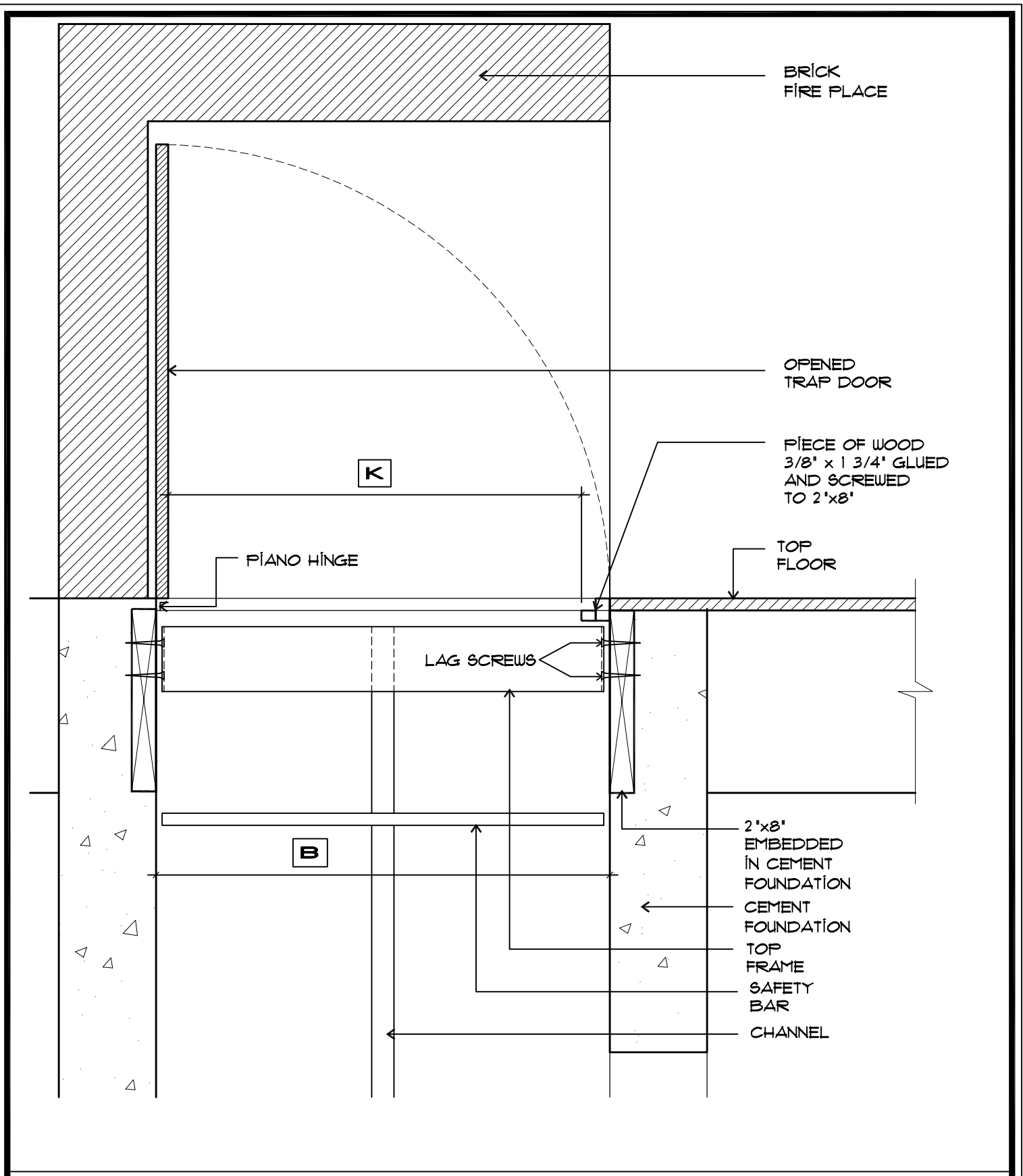
Manufactured by:
W. Bruce Fowler Industries Inc.
 4665 Nichol Road
 Waterville, Quebec, JOB 3H0
 Tél: (819)562-8510
 Fax: (819)562-2906

Product:
WOODWAITER

Date:
 MAY 23rd, 2006

Drawing:
 FRONT VIEW OF TOP FRAME
 (MOUNTED WITHIN THE FIREPLACE)

Drawing No: W111



Manufactured by:
W. Bruce Fowler Industries Inc.
 4665 Nichol Road
 Waterville, Quebec, JOB 3H0
 Tél: (819)562-8510
 Fax: (819)562-2906

Product:
WOODWAITER

Date:
 MAY 23rd, 2006

Drawing:
 SIDE VIEW OF TOP FRAME
 (MOUNTED WITHIN THE FIREPLACE)

Drawing No:
 W112