

Product:

**HANDYWAITER:
SHOP DRAWINGS**

Manufactured by:

W. Bruce Fowler Industries Inc.

4665 Nichol Road
Waterville, Quebec, JOB 3H0

Tél: (819)562-8510

Fax: (819)562-2906

Model no:

Date:

May 23rd 2006

HANDYWAITER

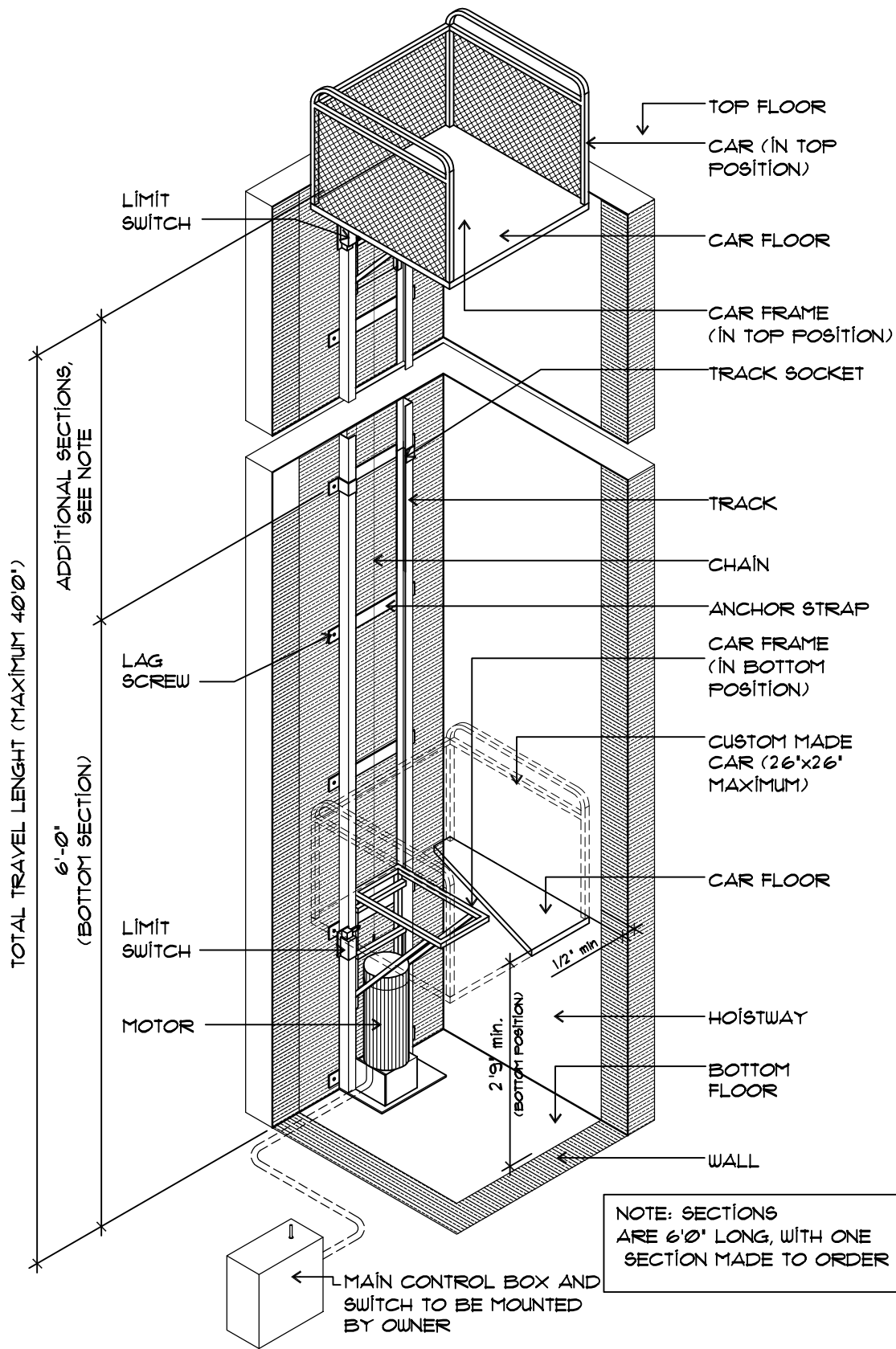
INSTALLATION INSTRUCTIONS FOR BOTH TOP + BOTTOM MOUNTED MOTORS

- 1) BEFORE INSTALLING THE HANDY WAITER PLEASE MAKE SURE THAT THE HOISTWAY AREA IS LINED WITH FIREPROOF MATERIALS ADEQUATE FOR YOUR LOCAL ZONING BYLAWS. (THIS IS UNIQUELY TO PREVENT THE HOISTWAY FROM ACTING AS A CHIMNEY IF A FIRE OCCURS)
- 2) INSTALL THE FIRST MODULAR TRACK SECTION. THIS SECTION SHOULD BE SECURED CENTRAL OF THE TRACKSIDE OF THE SHAFT. THE FOLLOWING NUMBERED SECTIONS STACK ON TOP OF EACH OTHER TO THE TOP OF THE HOISTWAY AND MUST ALSO BE SECURED TO THE HOISTWAY.
- 3) CAREFULLY UNROLL THE CHAIN THAT IS LOCATED IN THE CAR. THREAD THE CHAIN OVER THE TOP SPROCKET, BEING CAREFUL NOT TO TWIST IT, TO THE BOTTOM OF THE UNIT. TO MAKE THIS EASIER, NOW LIFT THE CAR APPROXIMATELY 4 OR 5 INCHES AND INSTALL THE CHAIN AROUND THE BOTTOM SPROCKET SO THAT THE WEIGHT OF THE CAR IS RESTING ON THE CHAIN, THIS ALLOWS EASIER INSTALLATION OF THE THREADED ROD INTO THE 5/16" HOLE ON THE BRACKET OF THE CAR. NOW INSTALL THE NUT, THEN ADJUST THE CHAIN UNTIL IT IS RELATIVELY TAUT. AGAIN CHECK THAT THERE ARE NO TWISTS AND THAT THE CHAIN IS ROUGHLY PARALLEL TO THE TRACK. THEN CONNECT THE SPRING TO THE IDLER. CUT ALL PLASTIC TIE-WRAPPS ON UNIT.
- 4) THE MASTER CONTROL PANEL IS ATTACHED TO THE MOTOR VIA A LARGE BLACK POWER CORD. IT SHOULD BE MOUNTED ON THE WALL NEAR THE MOTOR. ACCESS SHOULD BE VIA A SEPARATE DOOR NEAR THE MASTER PANEL FOR SERVICING. POWER IS 120 VOLT AND SHOULD BE ON A SEPARATE 15-AMP CIRCUIT BREAKER. THE 24-VOLT CONTROL PANELS ARE ATTACHED VIA CONNECTORS THAT ARE NUMBERED. BY CONNECTING LIKE NUMBERS YOU CAN COMPLETE THE INSTALLATION OF ALL THE CONTROL PANELS.
- 5) INSTALL THE DOOR STRIKER & DOOR SAFETY SWITCHES AS INDICATED ON THE ENCLOSED DIAGRAMS.

Manufactured by:
W. Bruce Fowler Industries Inc.
4665 Nichol Road
Waterville, Quebec, JOB 3H0
Tel: (819)562-8510
Fax: (819)562-2906

Product: **HANDYWAITER**
Date: May 23rd 2006

Drawing: **NOTES**
Drawing No: **H 101**



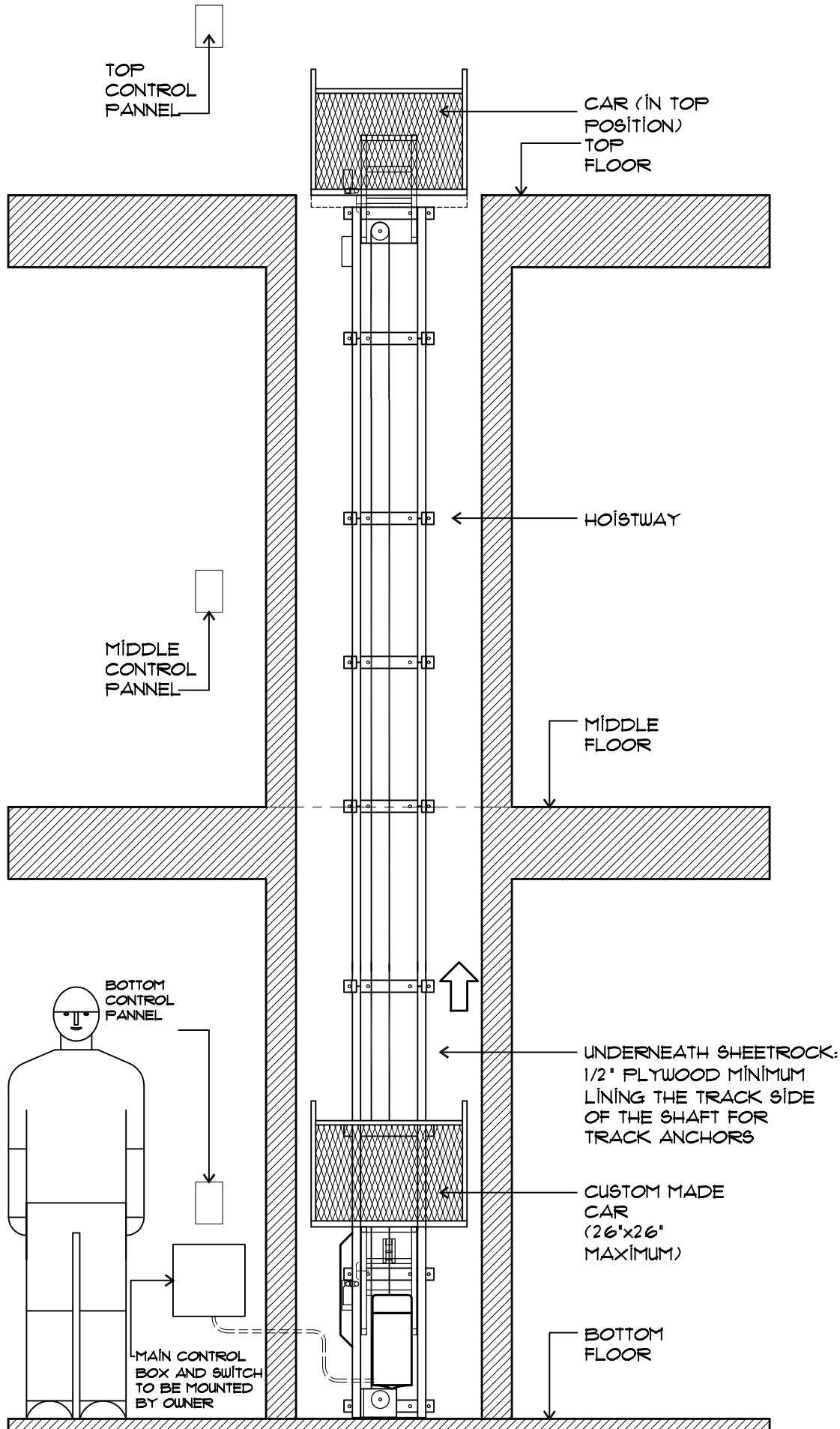
NOTE: SECTIONS ARE 6'-0" LONG, WITH ONE SECTION MADE TO ORDER

← MAIN CONTROL BOX AND SWITCH TO BE MOUNTED BY OWNER

Manufactured by:
W. Bruce Fowler Industries Inc.
 4665 Nichol Road
 Waterville, Quebec, JOB 3H0
 Tél: (819)562-8510
 Fax: (819)562-2906

Product: **HANDYWAITER**
 Date: May 23rd 2006
 Model no:

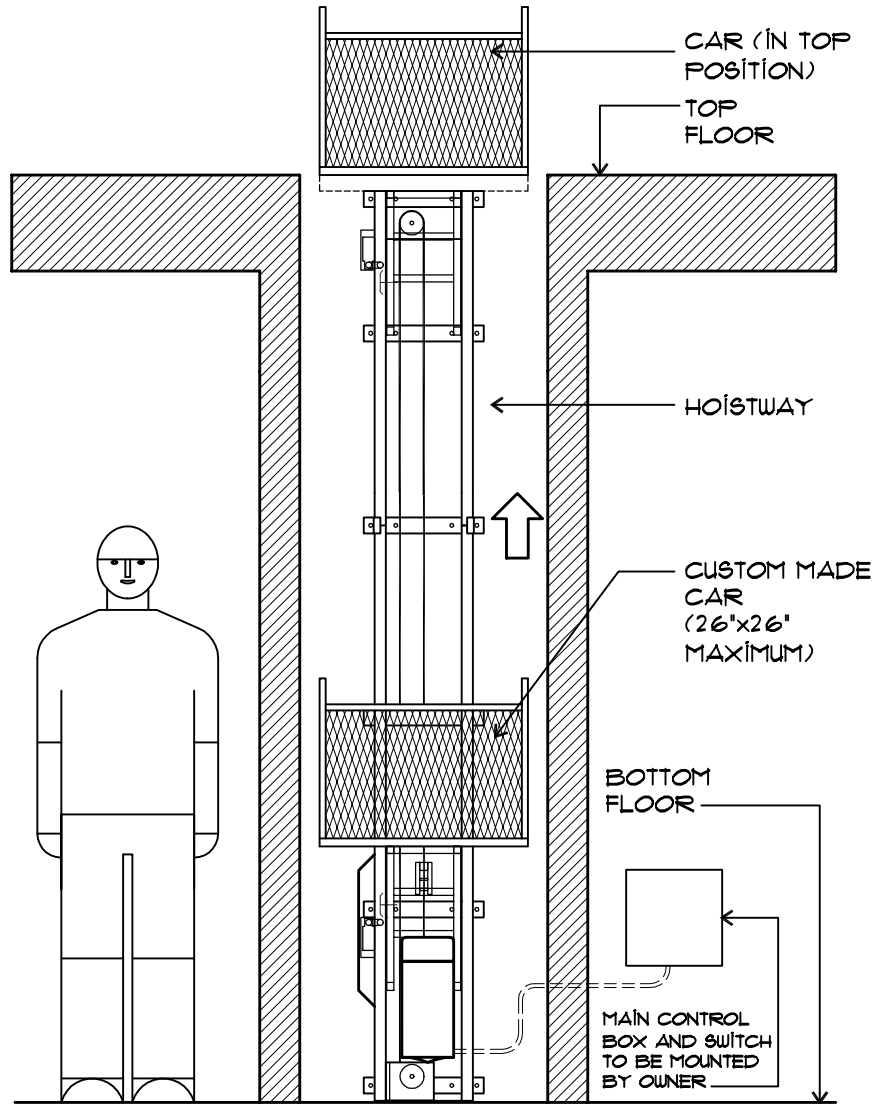
Drawing: **GENERAL VIEW**
 Drawing No: **H 102**



Product: **HANDYWAITER**
 Drawing: **FRONT VIEW**
 - 3 STOP UNIT
 Date: **May 23rd 2006**
 Drawing No: **H 103**

Manufactured by:
W. Bruce Fowler Industries Inc.
 4665 Nichol Road
 Waterville, Quebec, JOB 3HO
 Tél: (819)562-8510
 Fax: (819)562-2906

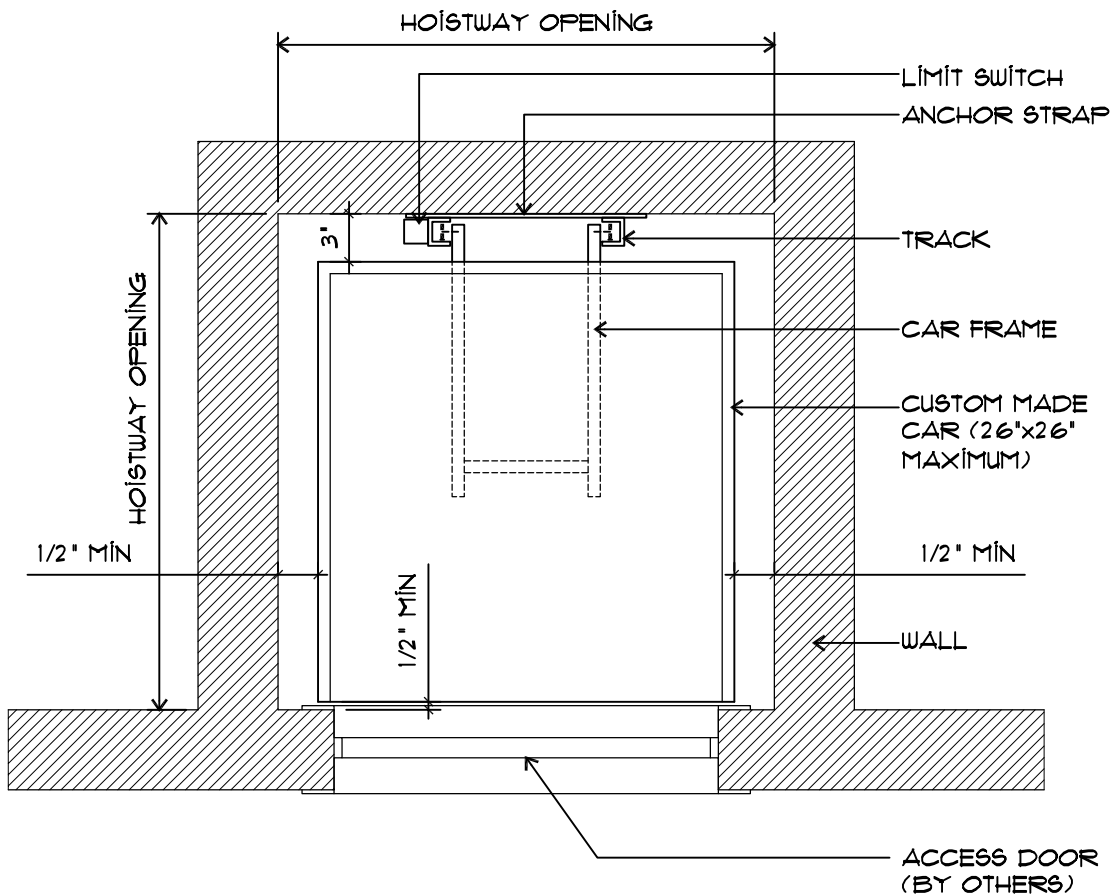
Model no:
 H 103



Manufactured by:
W. Bruce Fowler Industries Inc.
 4665 Nichol Road
 Waterville, Quebec, JOB 3H0
 Tél: (819)562-8510
 Fax: (819)562-2906

Product:
HANDYWAITER
Date:
 May 23rd 2006

Drawing: FRONT VIEW
 - 2 STOP UNIT
Drawing No:
 H 104



Manufactured by:
W. Bruce Fowler Industries Inc.
 4665 Nichol Road
 Waterville, Quebec, JOB 3H0
 Tél: (819)562-8510
 Fax: (819)562-2906

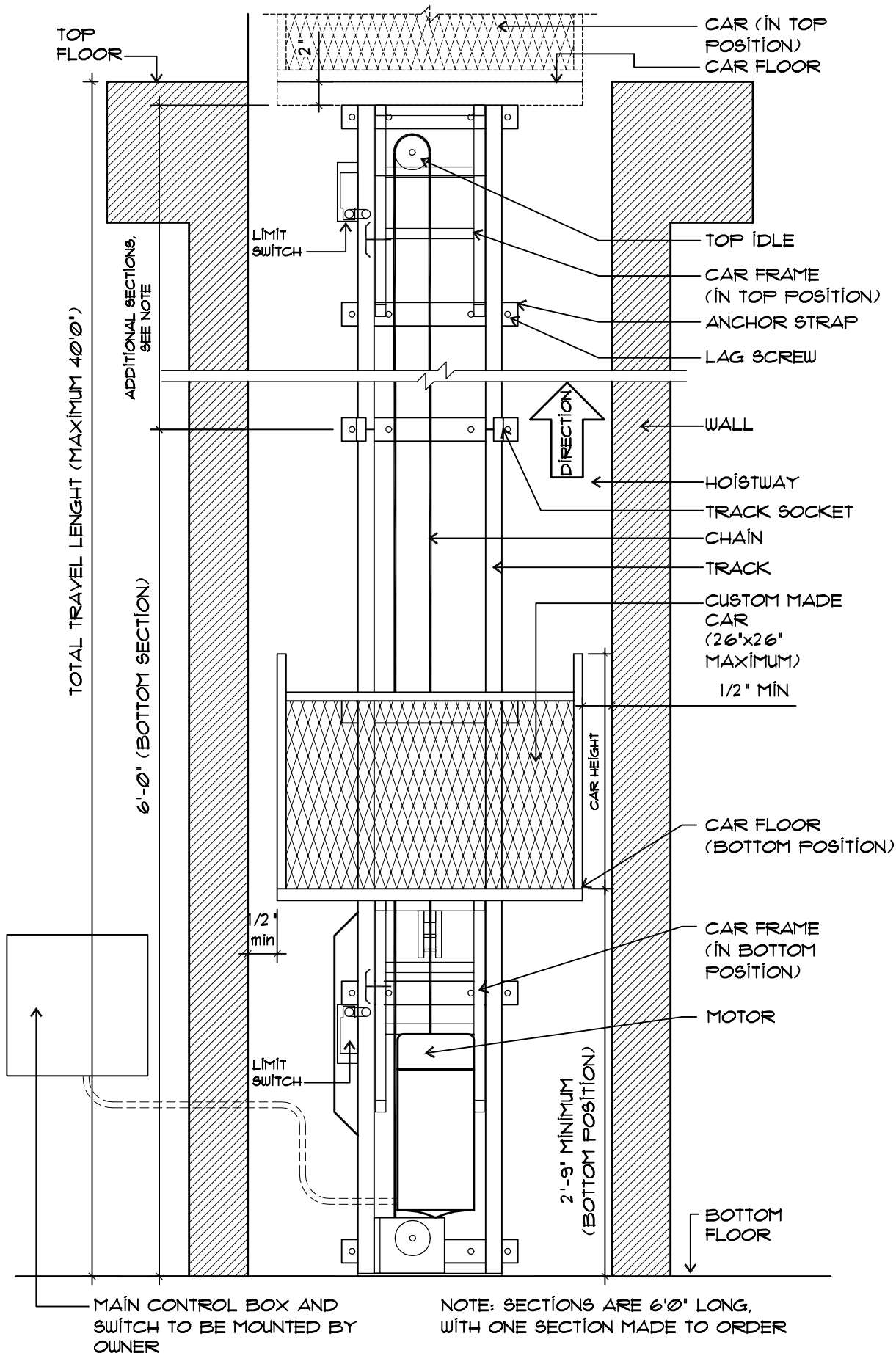
Product: **HANDYWAITER**

Date: May 23rd 2006

Drawing: **PLAN VIEW**

Model no:

Drawing No: **H 105**

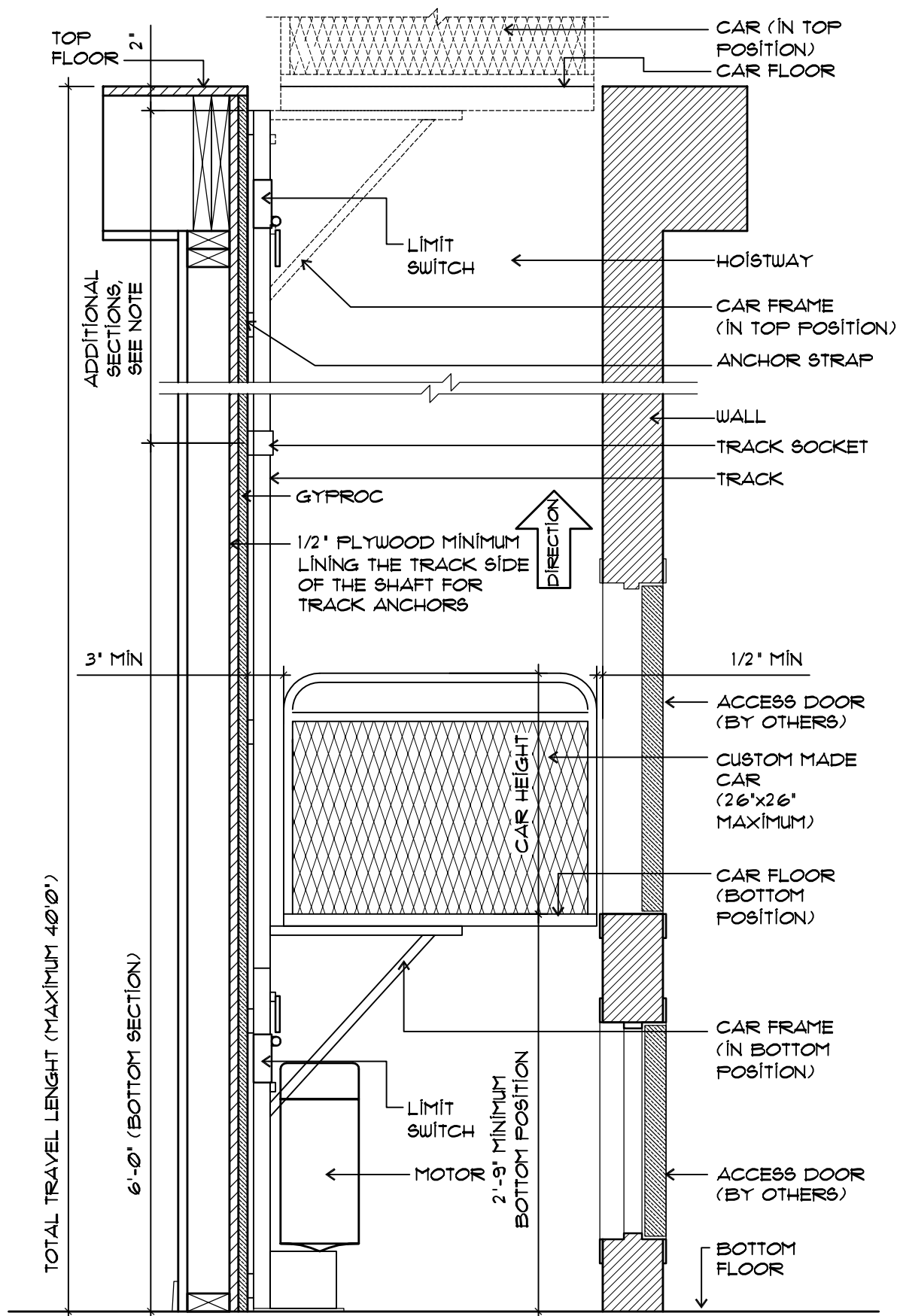


NOTE: SECTIONS ARE 6'0" LONG, WITH ONE SECTION MADE TO ORDER

Manufactured by:
W. Bruce Fowler Industries Inc.
 4665 Nichol Road
 Waterville, Quebec, JOB 3H0
 Tél: (819)562-8510
 Fax: (819)562-2906

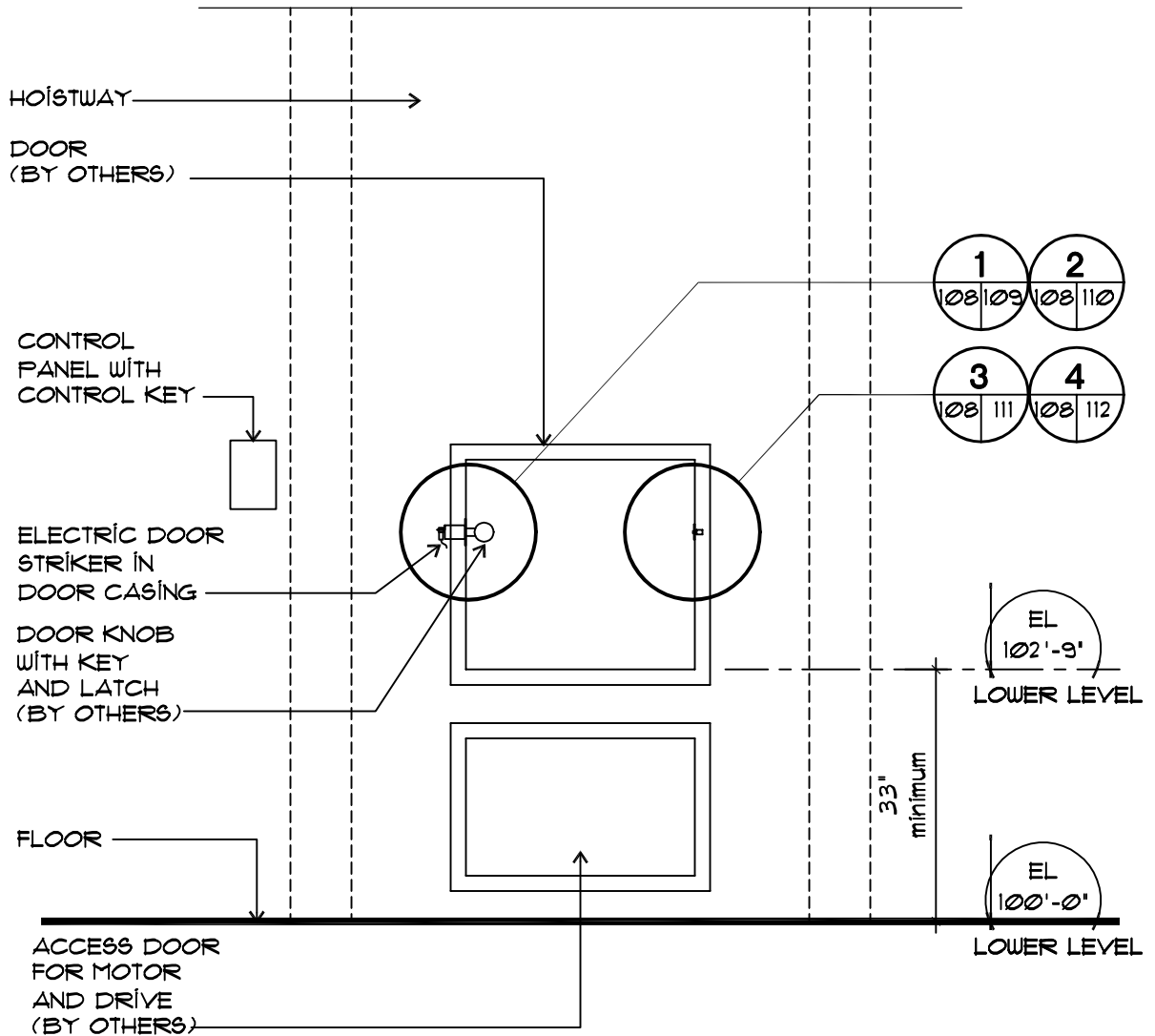
Product: **HANDYWAITER**
 Date: May 23rd 2006
 Model no:

Drawing: **FRONT VIEW**
 Drawing No: **H 106**



NOTE: SECTIONS ARE 6'0" LONG,
WITH ONE SECTION MADE TO ORDER

<p>Manufactured by: W. Bruce Fowler Industries Inc. 4665 Nichol Road Waterville, Quebec, JOB 3HO Téi: (819)562-8510 Fax: (819)562-2906</p>	<p>Product: HANDYWAITER Date: May 23rd 2006</p>	<p>Drawing: SIDE VIEW Drawing No: H 107</p>
---	---	---

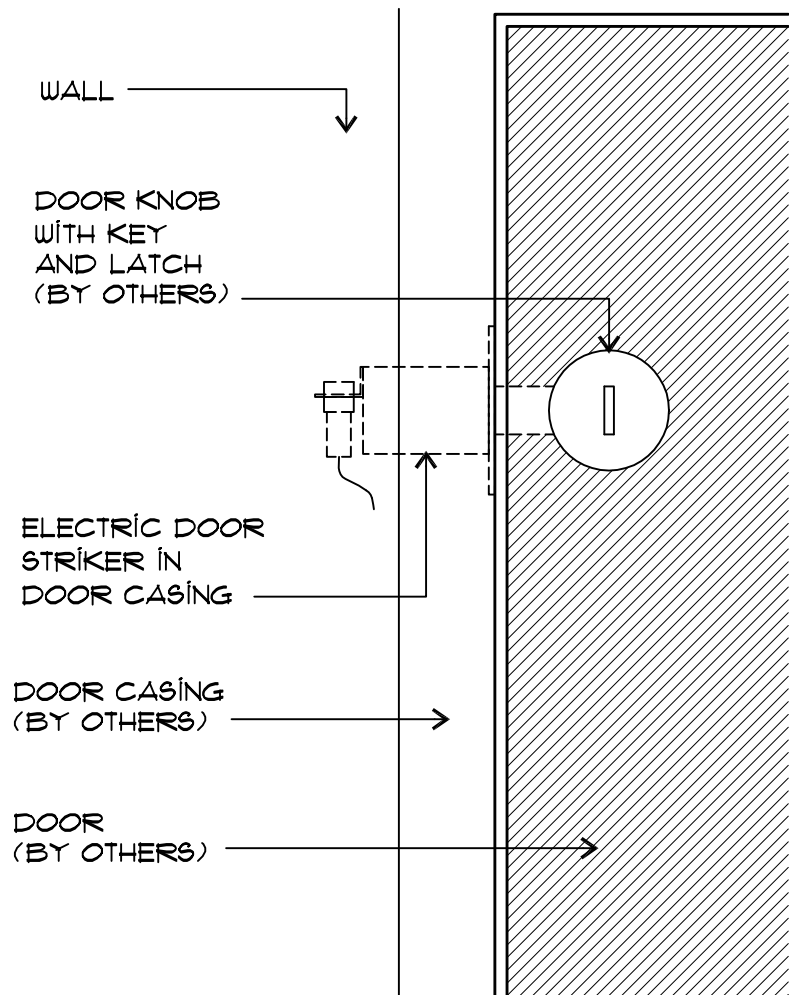


1 DOOR ELEVATION
 108 - SCALE: 1/2" = 1'-0"

Manufactured by:
W. Bruce Fowler Industries Inc.
 4665 Nichol Road
 Waterville, Quebec, JOB 3H0
 Tél: (819)562-8510
 Fax: (819)562-2906

Product: **HANDYWAITER**
 Date: May 23rd 2006
 Model no:

Drawing: **DOOR ELEVATION**
 Drawing No: **H 108**



ELEVATION DETAIL ELECTRIC
DOOR STRIKER



SCALE: 3"=1'0"

Manufactured by:
W. Bruce Fowler Industries Inc.
4665 Nichol Road
Waterville, Quebec, JOB 3H0
Tél: (819)562-8510
Fax: (819)562-2906

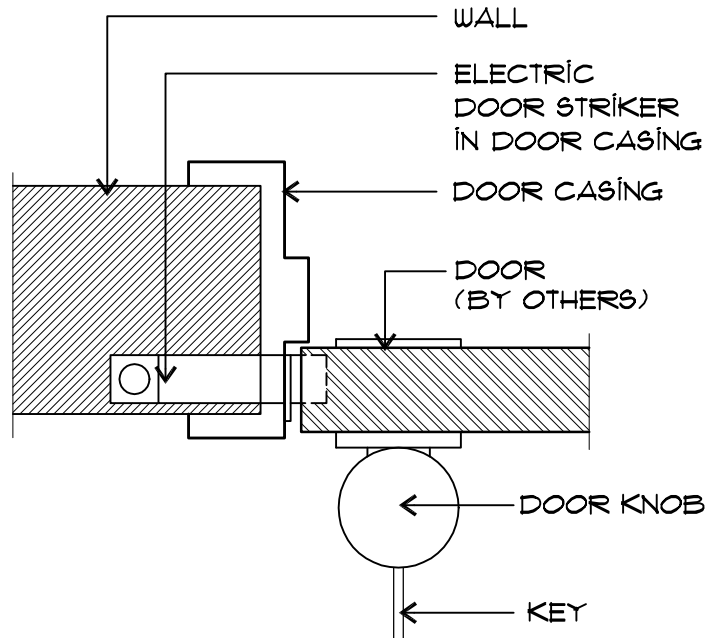
Product:
HANDYWAITER

Date:
May 23rd 2006

Model no:

Drawing:
ELEVATION DETAIL
ELECTRIC DOOR STRIKER

Drawing No:
H 109

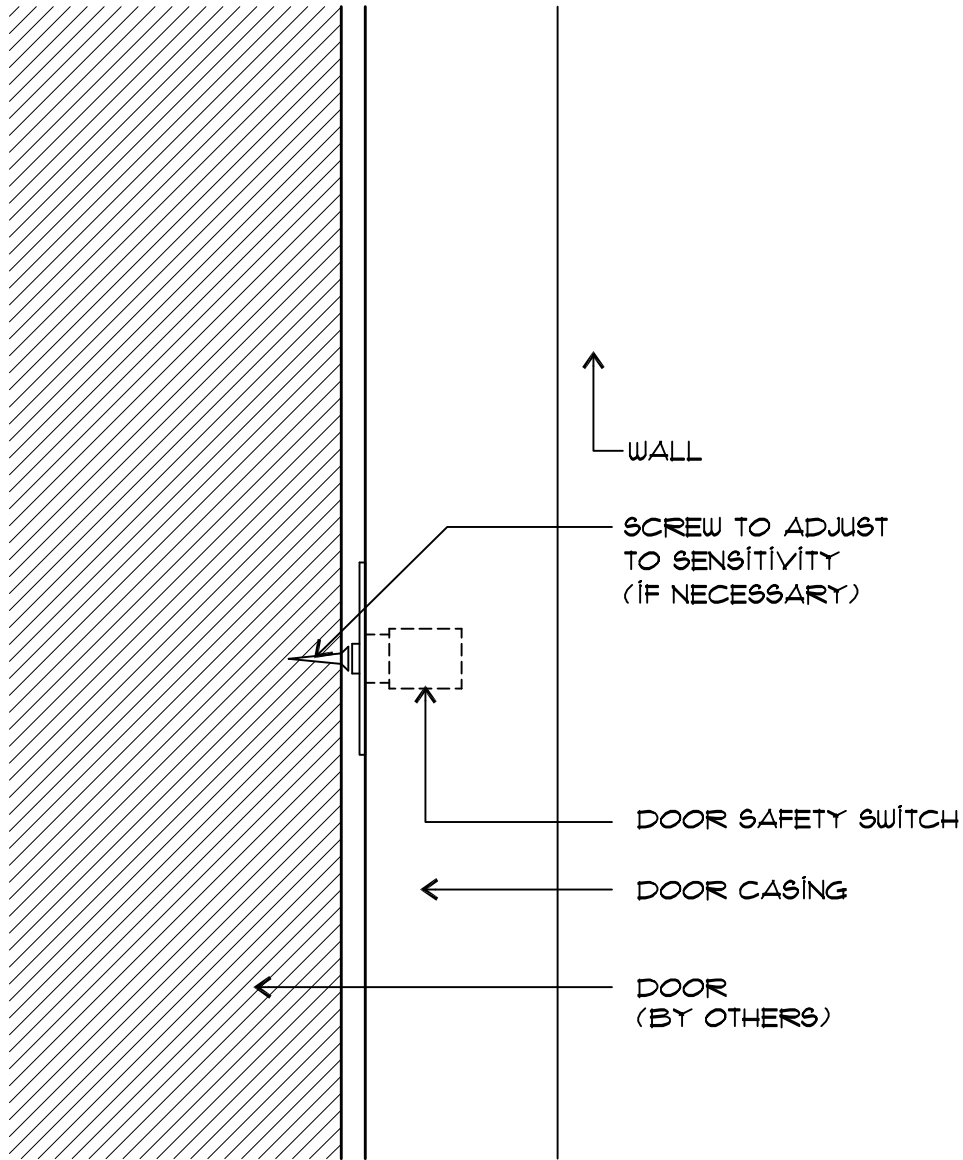


2
 PLAN DETAIL ELECTRIC DOOR STRIKER
 SCALE: 3"=1'0"

Manufactured by:
W. Bruce Fowler Industries Inc.
 4665 Nichol Road
 Waterville, Quebec, JOB 3H0
 Tél: (819)562-8510
 Fax: (819)562-2906

Product:
HANDYWAITER
Date:
 May 23rd 2006

Drawing:
 PLAN DETAIL ELECTRIC DOOR STRIKER
Drawing No:
 H 110



ELEVATION DETAIL
DOOR SAFETY SWITCH

SCALE: 6"=1'0"

Manufactured by:
W. Bruce Fowler Industries Inc.
4665 Nichol Road
Waterville, Quebec, JOB 3H0
Tél: (819)562-8510
Fax: (819)562-2906

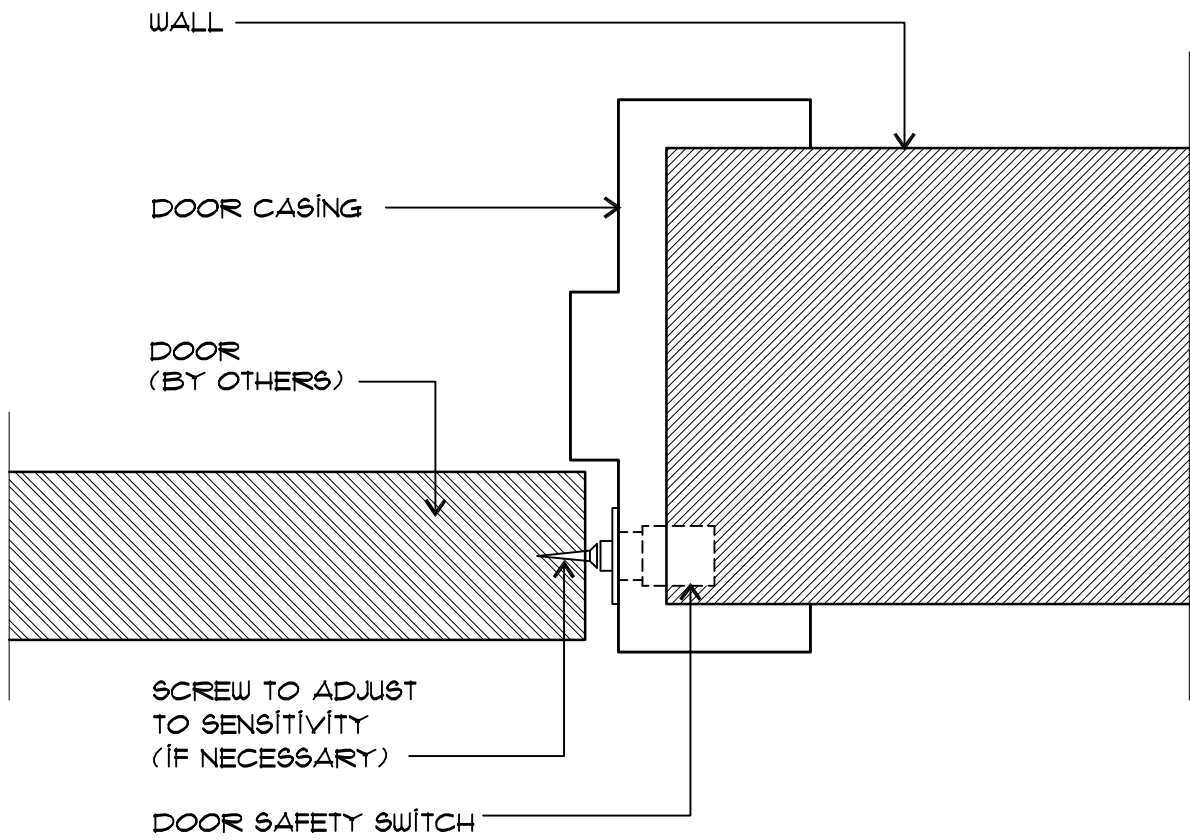
Product:
HANDYWAITER

Date:
May 23rd 2006

Model no:

Drawing:
ELEVATION DETAIL
DOOR SAFETY SWITCH

Drawing No:
H 111



PLAN DETAIL
DOOR SAFETY SWITCH



SCALE: 6"=1'0"

Manufactured by:
W. Bruce Fowler Industries Inc.
4665 Nichol Road
Waterville, Quebec, JOB 3H0
Tel: (819)562-8510
Fax: (819)562-2906

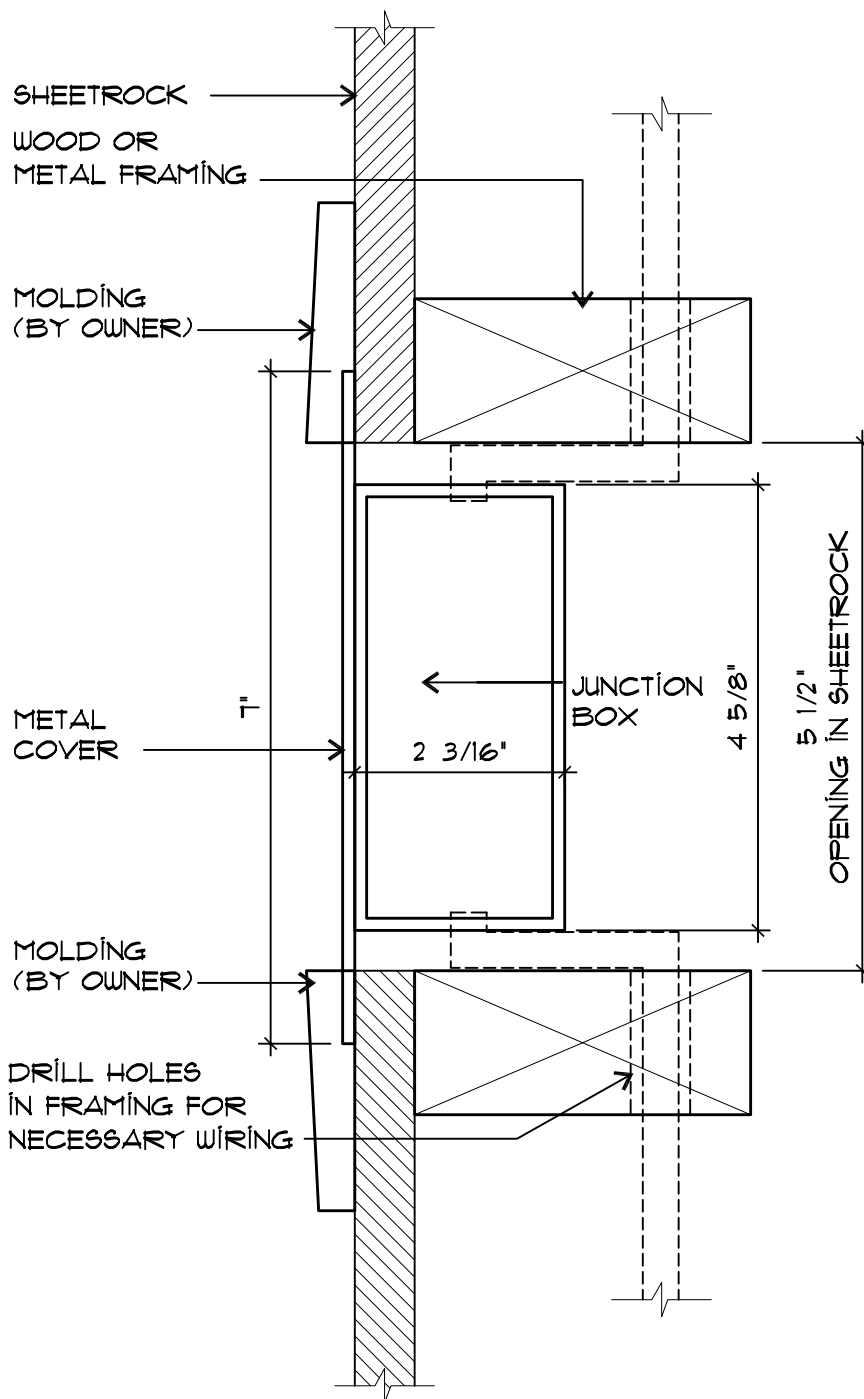
Product:
HANDYWAITER

Drawing:
PLAN DETAIL
DOOR SAFETY SWITCH

Date:
May 23rd 2006

Model no:

Drawing No:
H 112



SIDE VIEW-
CONTROL PANEL

SCALE: 6"=1'0"

Manufactured by:
W. Bruce Fowler Industries Inc.
 4665 Nichol Road
 Waterville, Quebec, JOB 3H0
 Tél: (819)562-8510
 Fax: (819)562-2906

Product:
HANDYWAITER

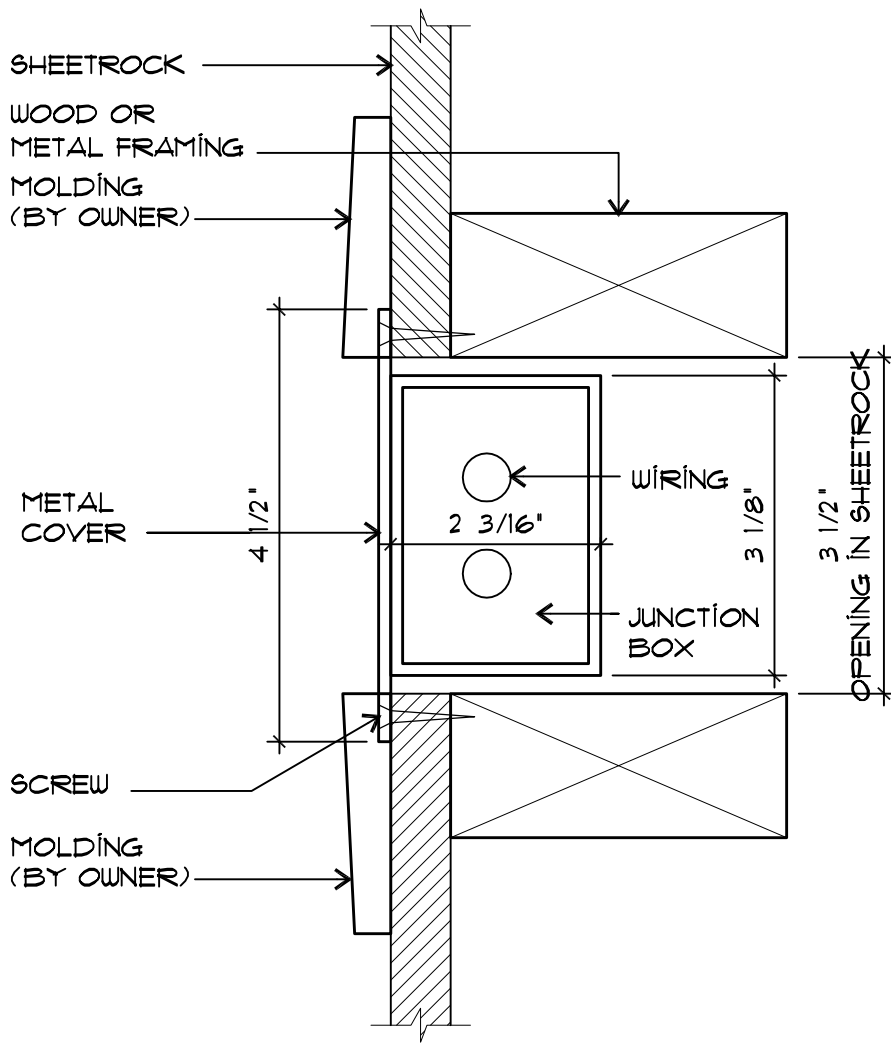
Date:
 May 23rd 2006

Model no:

Drawing:
 SIDE VIEW-
 CONTROL PANEL

Drawing No:

H 113



PLAN VIEW-
CONTROL PANEL

SCALE: 6"=1'0"

Manufactured by:
W. Bruce Fowler Industries Inc.
4665 Nichol Road
Waterville, Quebec, JOB 3H0
Tél: (819)562-8510
Fax: (819)562-2906

Product:
HANDYWAITER

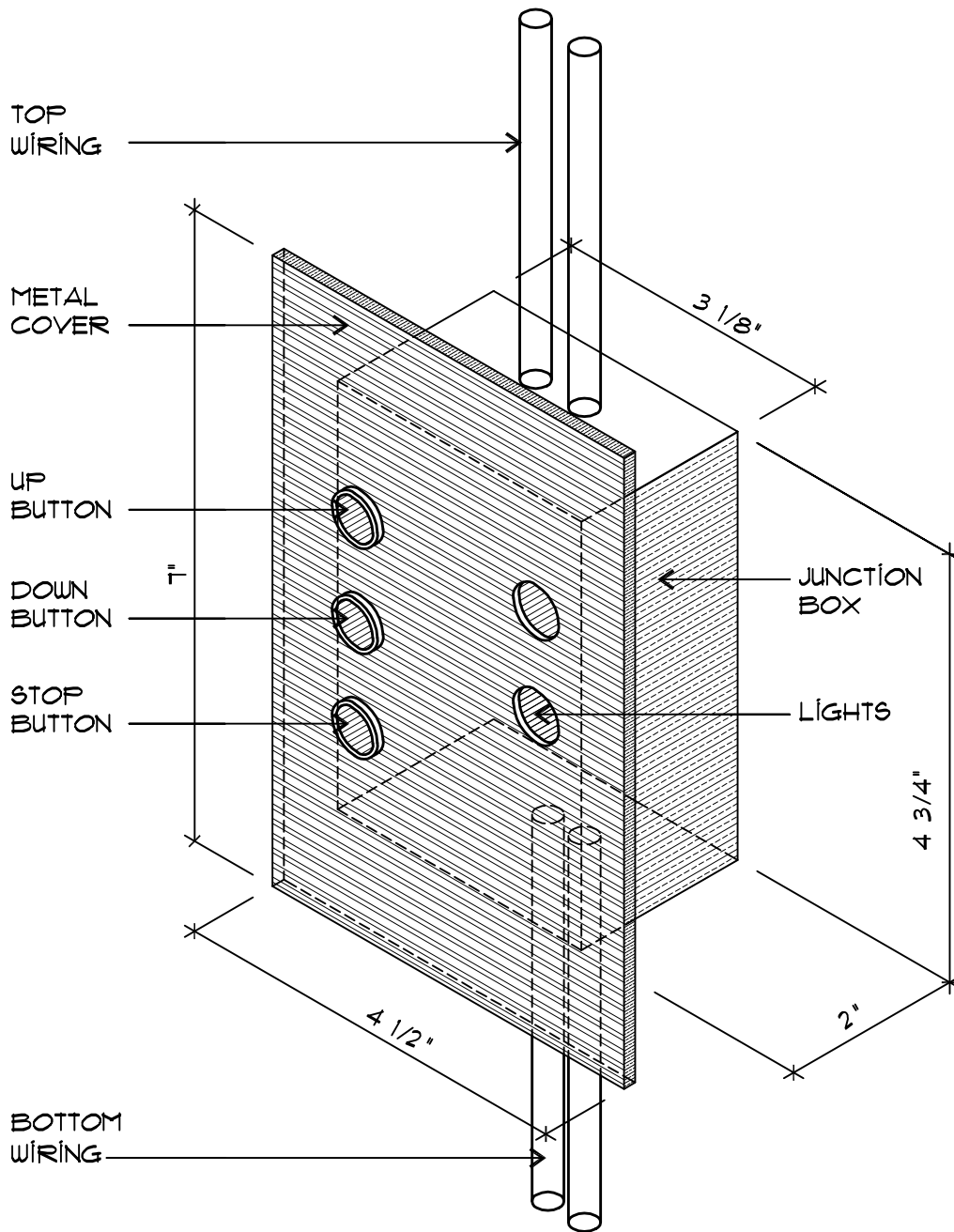
Date:
May 23rd 2006

Model no:

Drawing No:

PLAN VIEW-
CONTROL PANEL

H 114



DETAIL-
CONTROL PANEL

NO SCALE

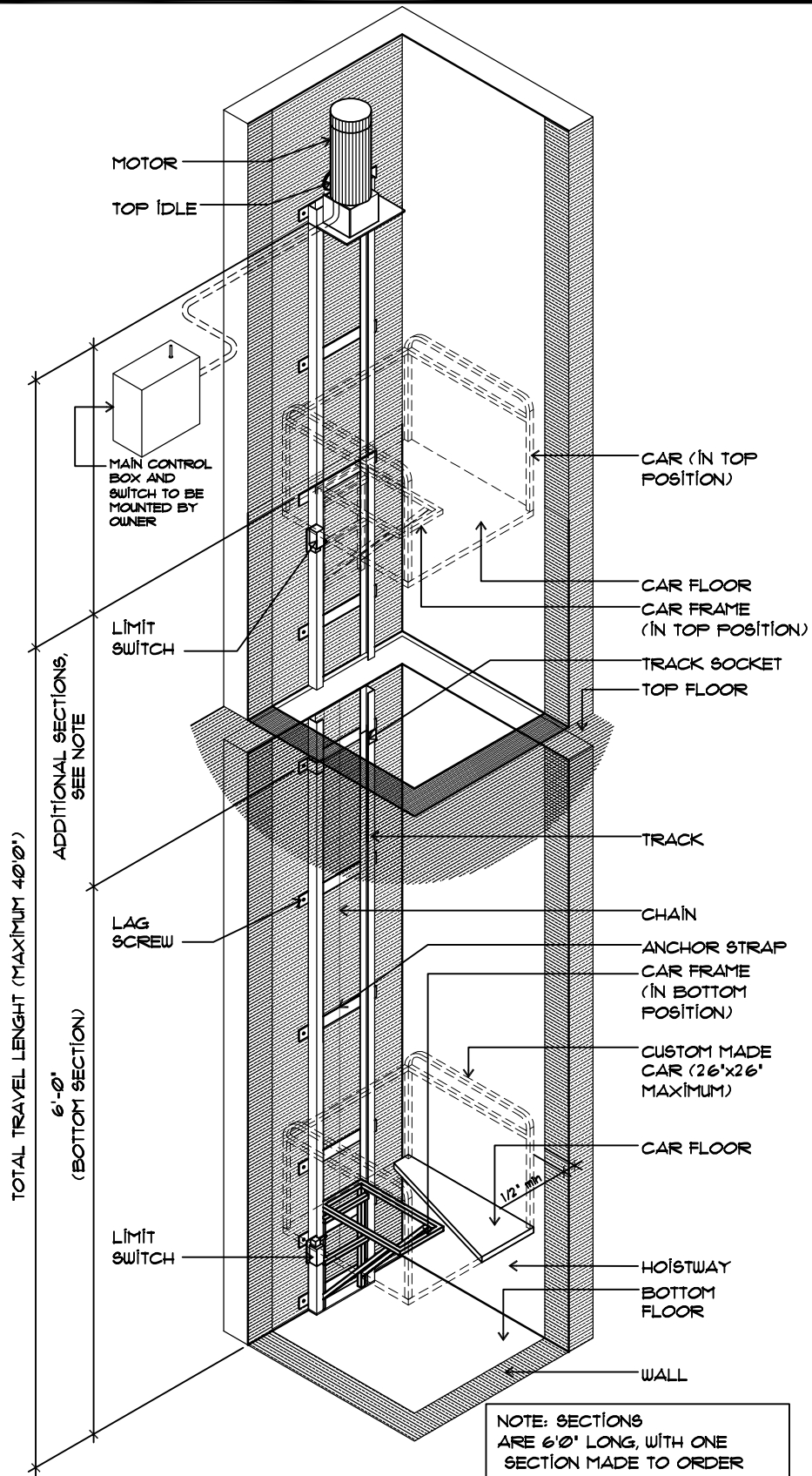
Manufactured by:
W. Bruce Fowler Industries Inc.
 4665 Nichol Road
 Waterville, Quebec, JOB 3H0
 Tél: (819)562-8510
 Fax: (819)562-2906

Product:
HANDYWAITER

Date:
 May 23rd 2006

Model no:

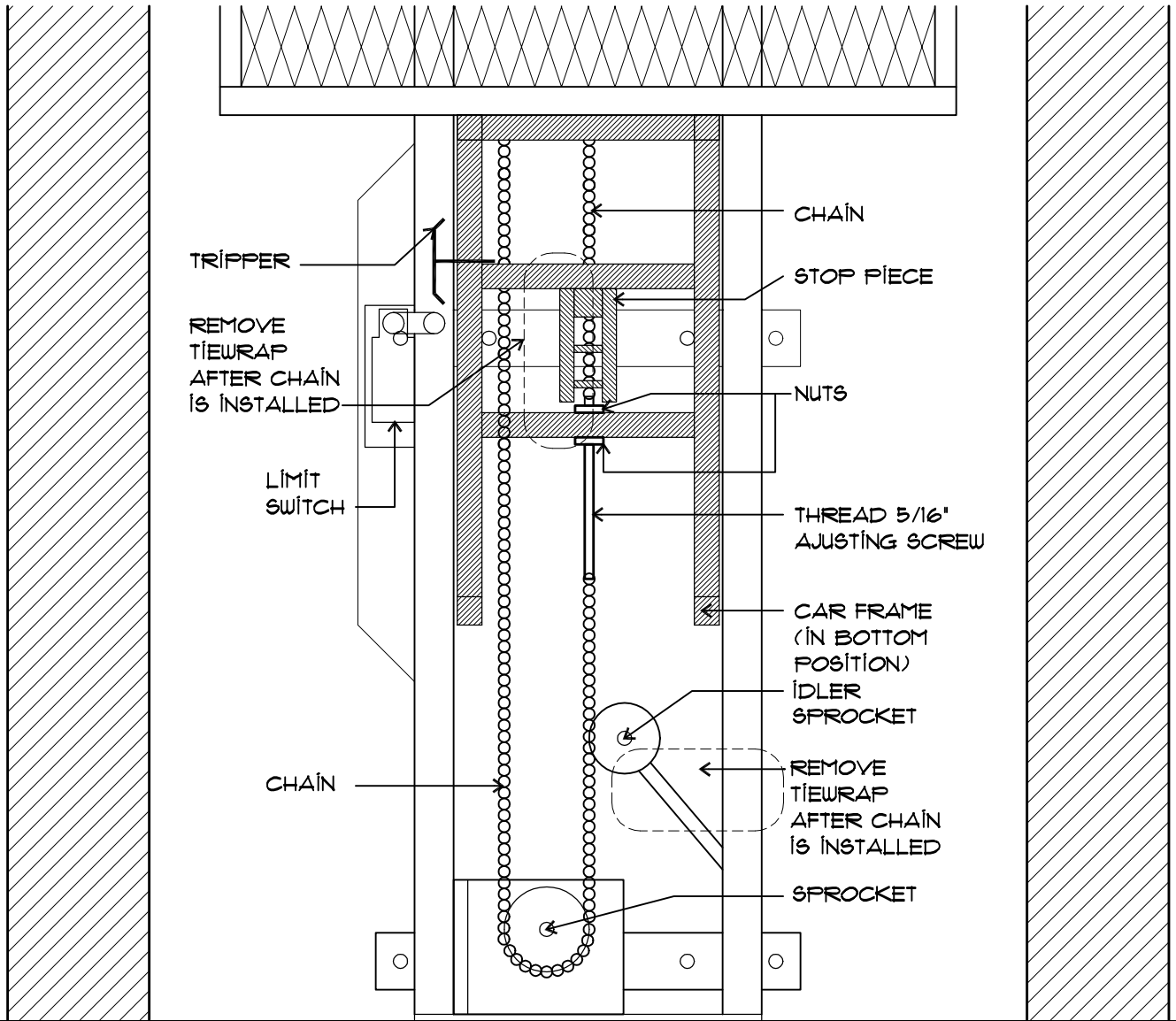
Drawing:
 DÉTAIL-
 CONTROL PANEL
 Drawing No:
 4 115



Manufactured by:
W. Bruce Fowler Industries Inc.
 4665 Nichol Road
 Waterville, Quebec, JOB 3H0
 Tél: (819)562-8510
 Fax: (819)562-2906

Product: **HANDYWAITER**
 Date: May 23rd 2006
 Model no:

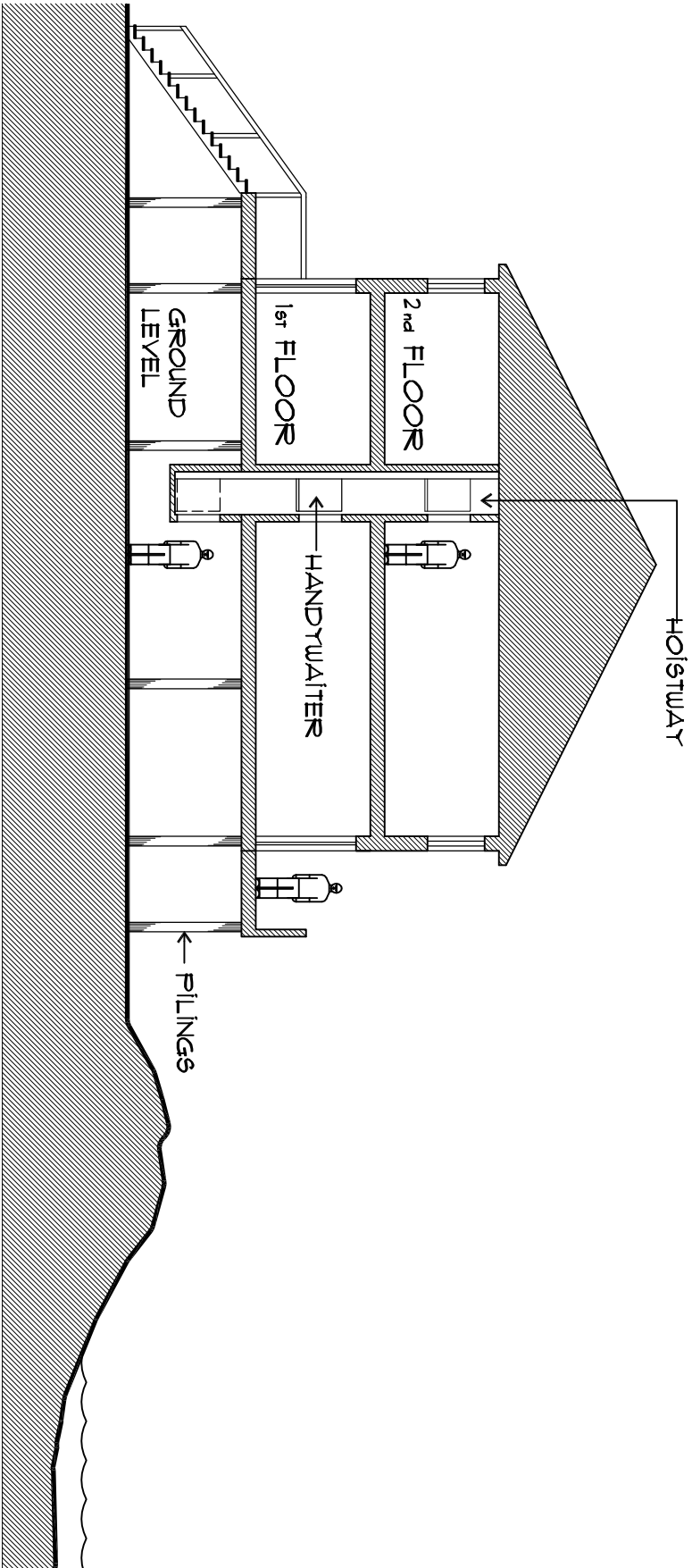
Drawing: **GENERAL VIEW
 TOP MOUNTED DRIVE**
 Drawing No: **H 116**



Manufactured by:
W. Bruce Fowler Industries Inc.
 4665 Nichol Road
 Waterville, Quebec, JOB 3H0
 Tél: (819)562-8510
 Fax: (819)562-2906

Product: **HANDYWAITER**
 Date: May 23rd 2006
 Model no:

Drawing: **VIEW OF CHAIN BEHIND MOTOR**
 Drawing No: **H 117**



Manufactured by:
W. Bruce Fowler Industries Inc.

4665 Nichol Road
 Waterville, Quebec, J0B 3H0
 Tél: (819)562-8510
 Fax: (819)562-2906

Product:

HANDYWAITER

Drawing:

GENERAL VIEW OF HOUSE ON PILINGS-
 TOP MOUNTED DRIVE

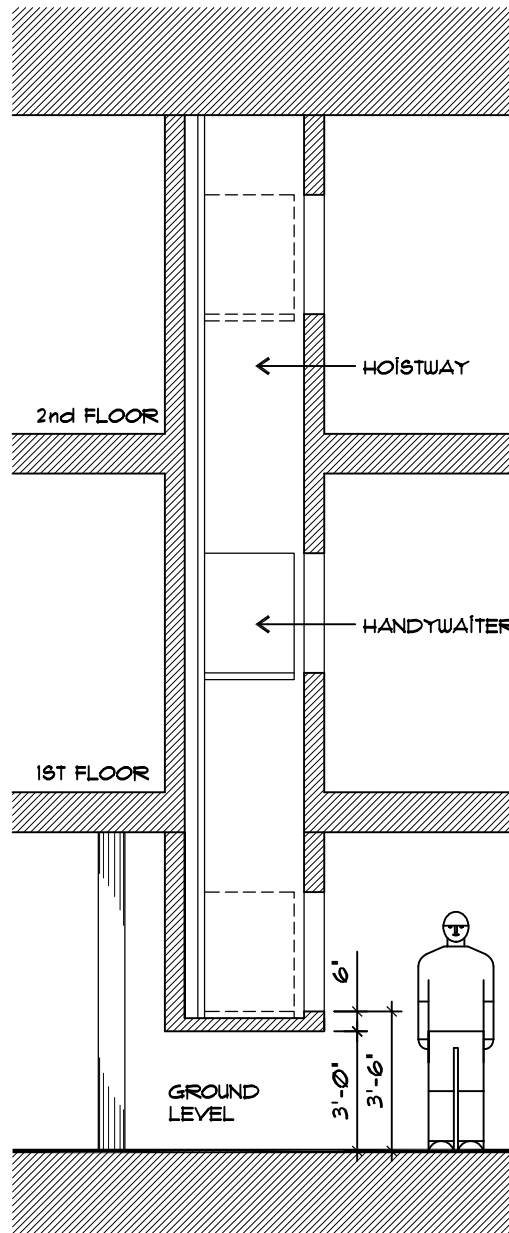
Date:

May 23rd 2006

Model no:

Drawing No

H 118



Manufactured by:
W. Bruce Fowler Industries Inc.
 4665 Nichol Road
 Waterville, Quebec, JOB 3H0
 Tél: (819)562-8510
 Fax: (819)562-2906

Product:
HANDYWAITER

Drawing:
 DETAIL VIEW OF HOUSE ON PILINGS-
 TOP MOUNTED DRIVE

Date:
 May 23rd 2006

Model no:

Drawing No:
 H 119